

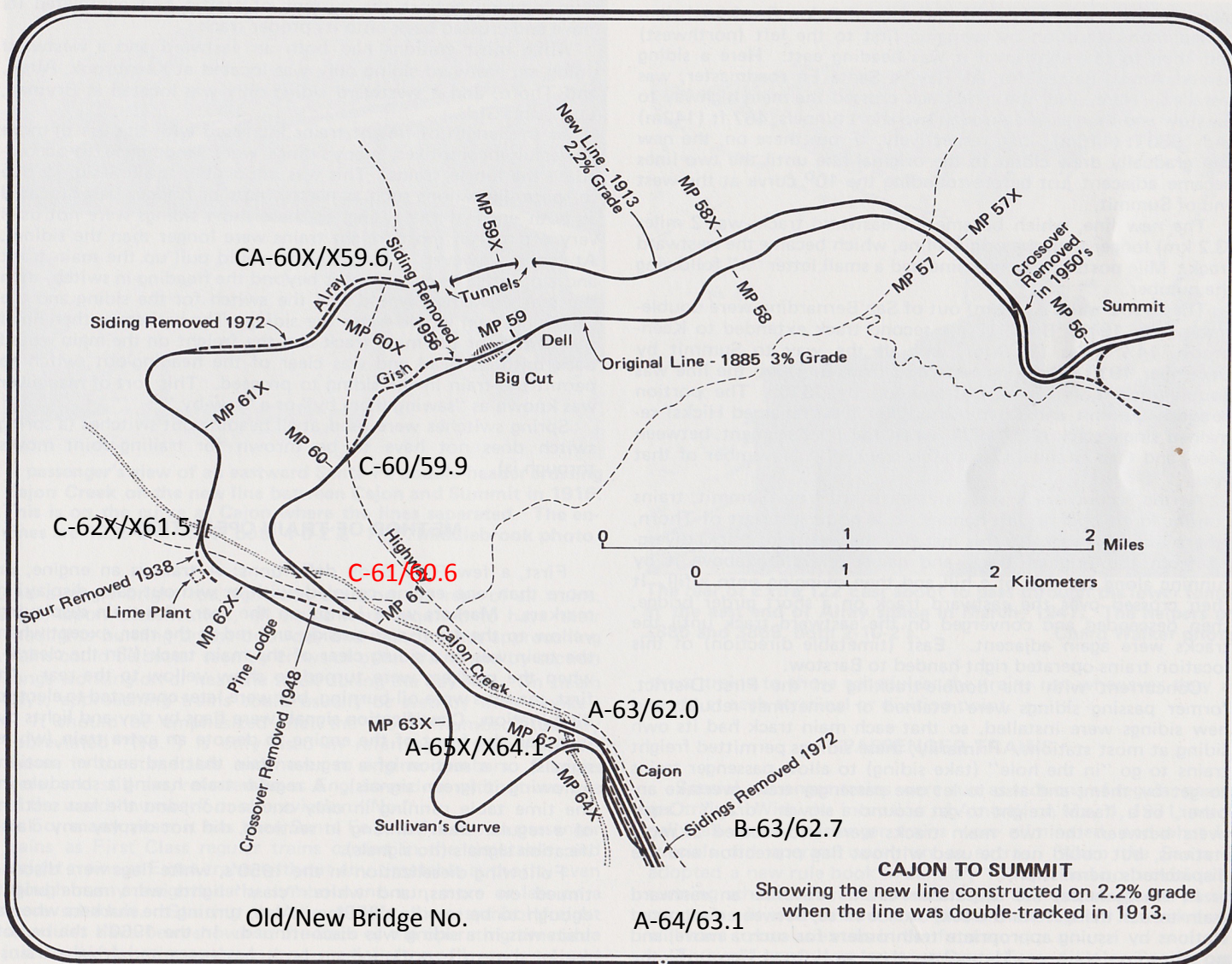
# Cajon Bridge C-61/60.6

DRAINAGE AREA SQ. MI.	LOS ANGELES DIVISION. BRIDGE LIST FIRST DISTRICT										
	BRIDGE NO.			M. P.	CTR.	SPANS			TOTAL	YEAR	KIND OF STRUCTURE
	ORIG.	OLD	NEW	PLUS	HT.	NO	LGH	TOT'L	LGH	ERECT	
28.0	105	C-61	60.6	3393	7.5	2	90.0		181.7	1915	Class "DD" Thru Girder B.D. on Conc. 90"Gd. RI. Skew

From The AT&SF RY System, Coast Lines, Los Angeles Division, Bridge List, p 47

Map from Railroading Through Cajon Pass, Chard Walker

Mike Davis - January 2019



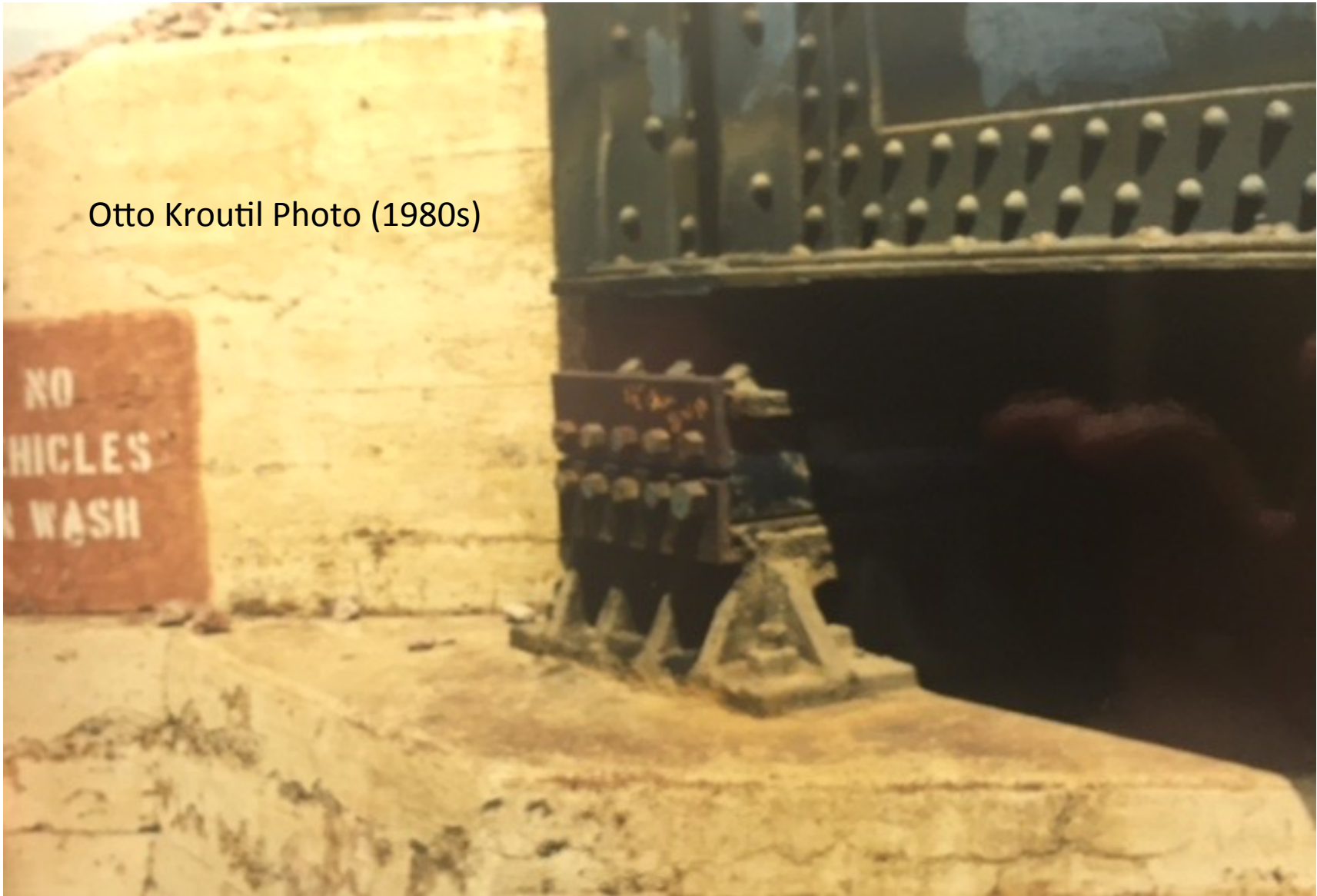
Map from Railroading Through Cajon Pass, Chard Walker  
 Mike Davis - January 2019



Otto Kroutil Photo (1980s)



Otto Kroutil Photo (1980s)



Otto Kroutil Photo (1980s)



Otto Kroutil Photo (1980s)





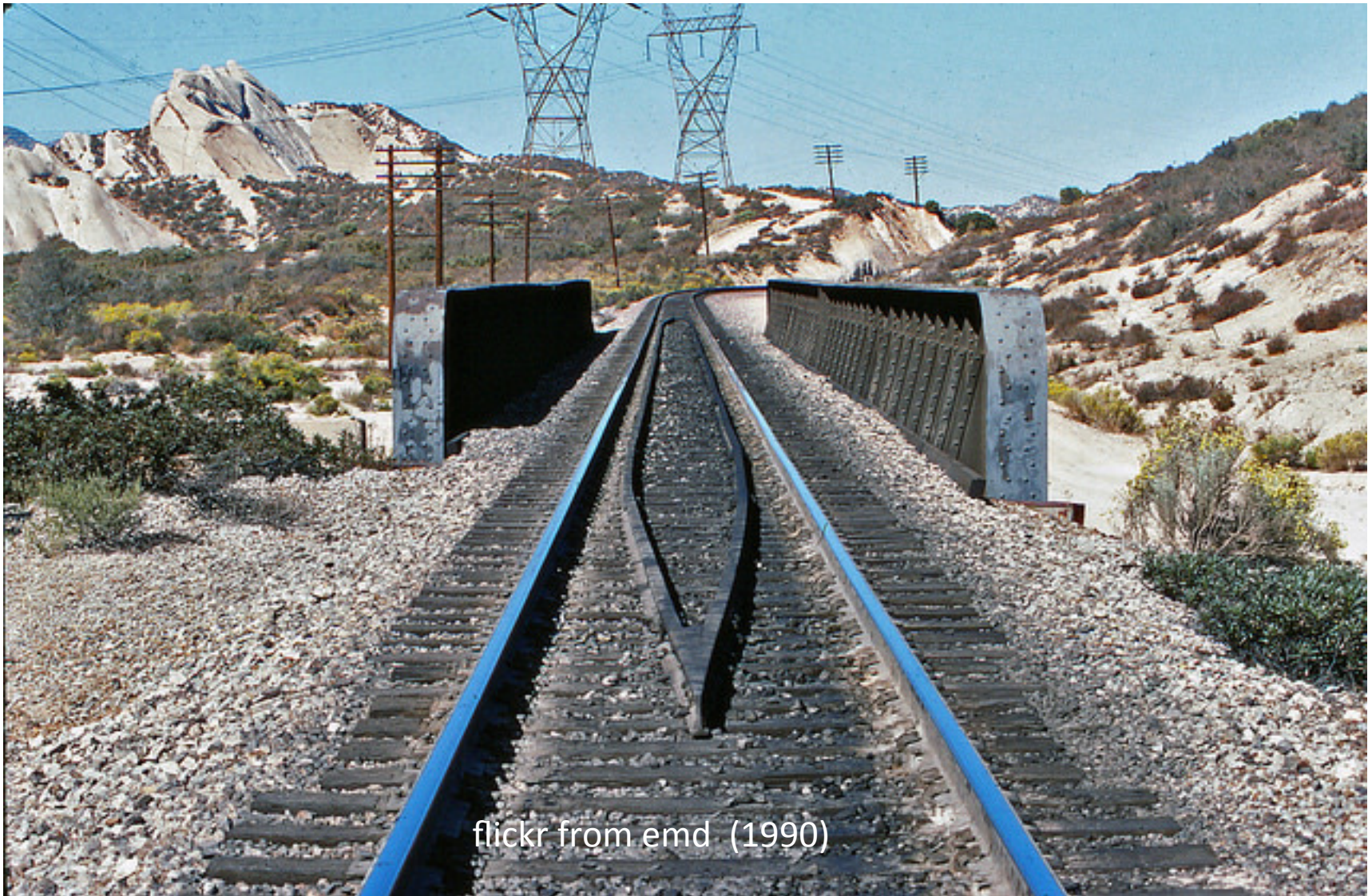
Otto Kroutil Photo (1980s)



Otto Kroutil Photo (1980s)



Otto Kroutil Photo (1980s)



flickr from emd (1990)

<https://www.flickr.com/photos/emd111/with/34979461952>

Mike Davis - January 2019



Mike Davis's model with ground down Monroe/AIM 554 abutments, pier from 2" x 4", Central Valley 72' girder sections, ME Bridge Shoes, and a masonite deck with cork ballast strips.

Mike Davis - January 2019