

La Grande Station, Los Angeles, CA – 1914

Alterations for Increased Ticket Office and Newstand Facilities

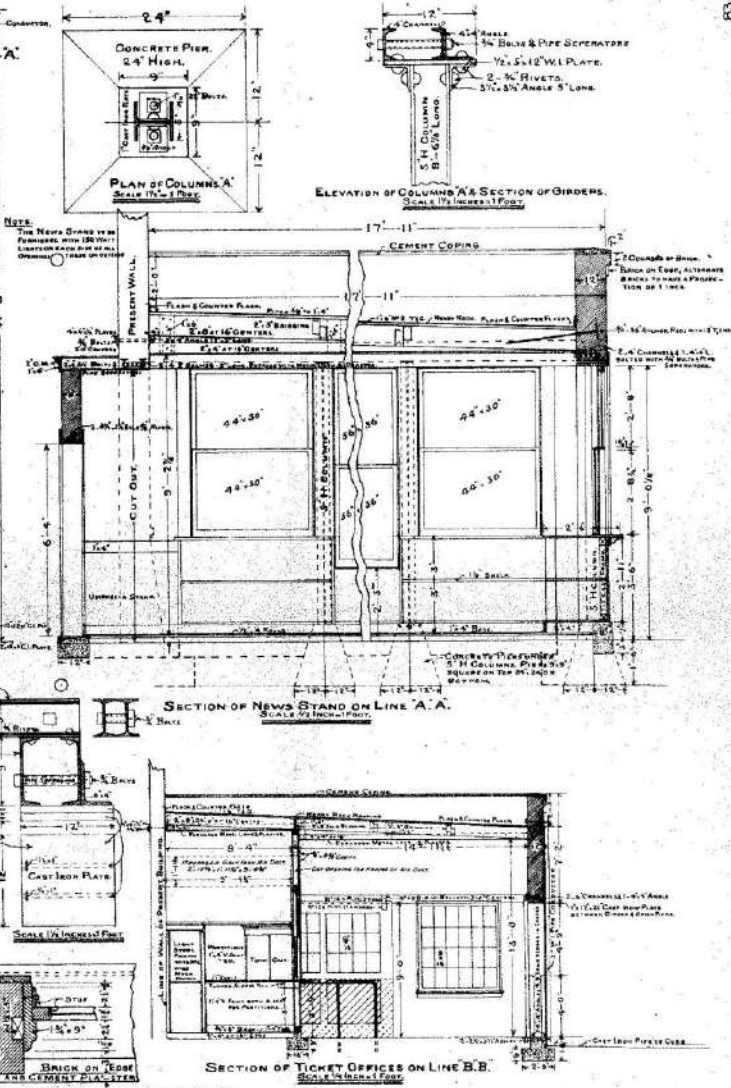
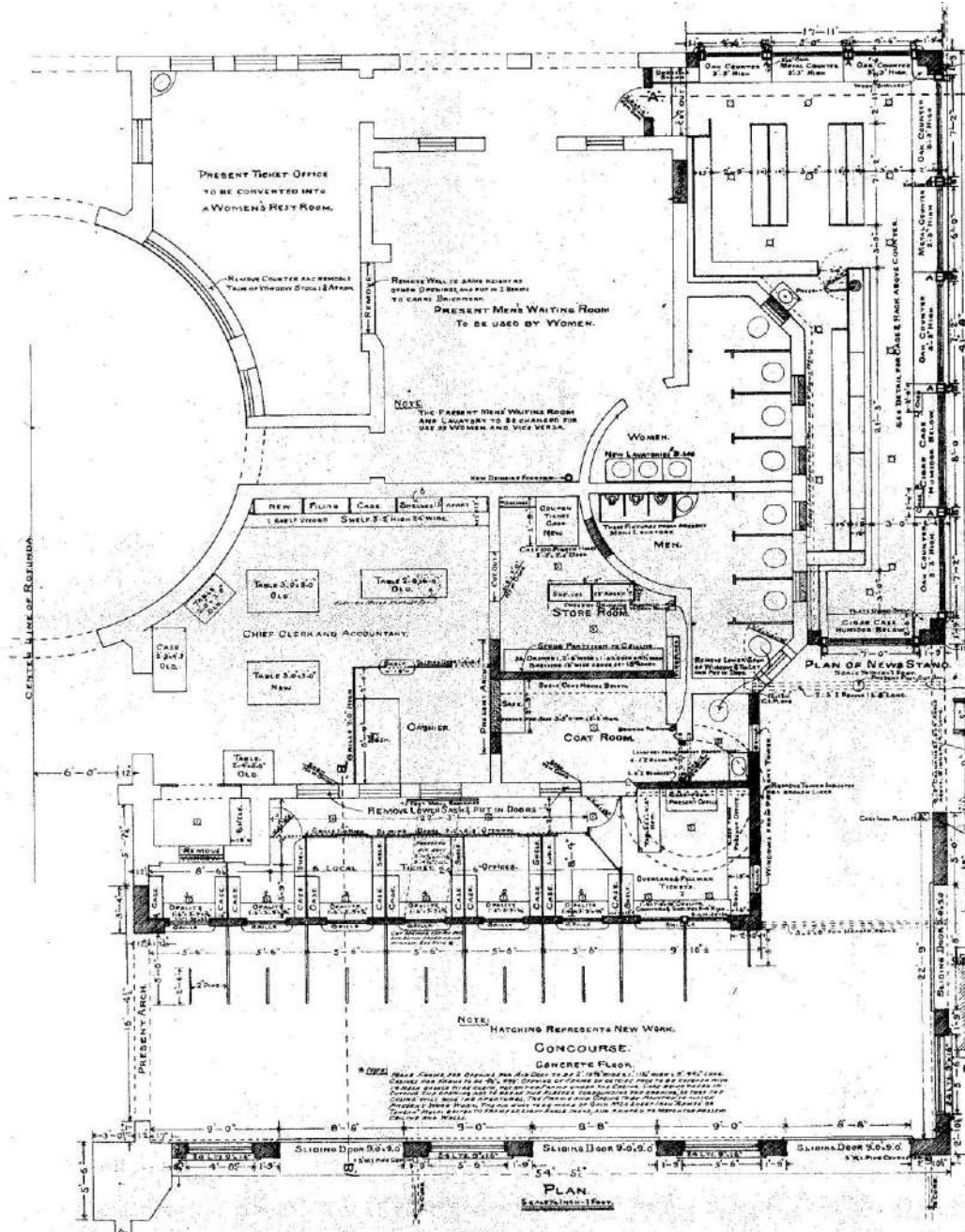
Proposed Changes to toilets

Changes in Ticket Office and Ticket Cases

Contributed by Richard Stern

Alterations for Increased Ticket Office and Newstand Facilities

83-10912



THE A. T. AND S. F. RY. CO.
 LOS ANGELES DIVISION
 ALTERATIONS FOR INCREASED TICKET OFFICE
 AND NEWS STAND FACILITIES
 LA GRANDE DEPOT, LOS ANGELES, CAL.
 LOS ANGELES, CAL. AUGUST 31, 1914
 SCALE AS NOTED
 C.E.C.L. No 83-10912
 SHEET 1 of 5 SHEETS
 G. W. HARRIS
 CHIEF ENGINEER

MM-10912

La Grande Station, Los Angeles, 1914

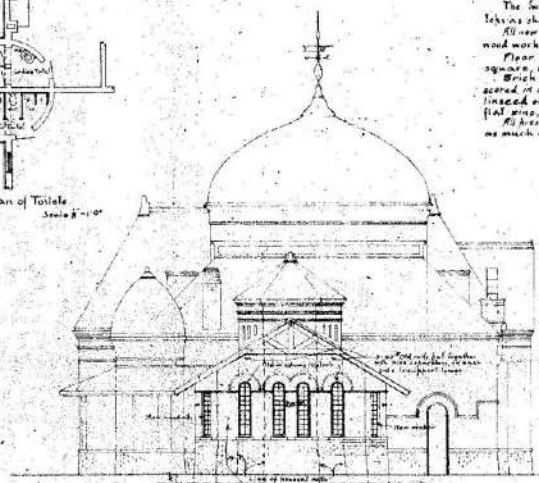
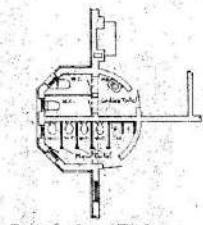
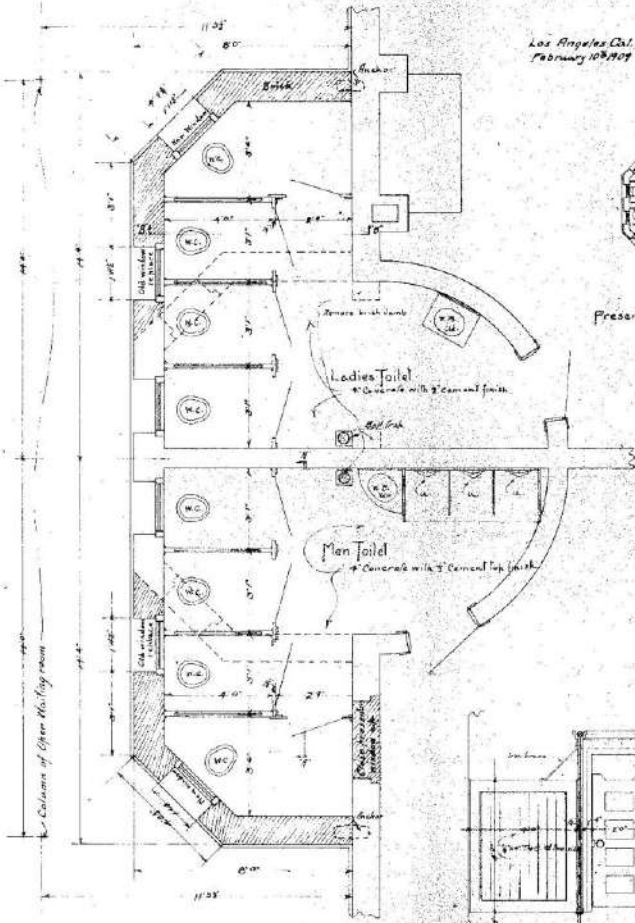
Proposed Changes to Toilets

Provided by Richard Stern

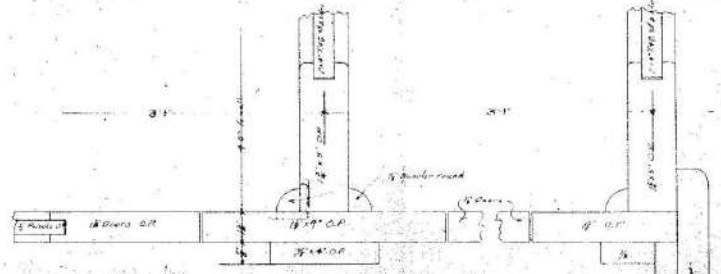
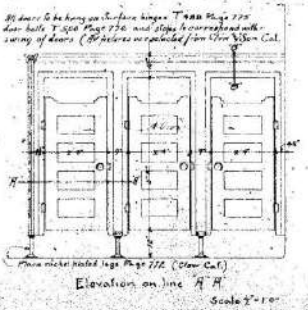
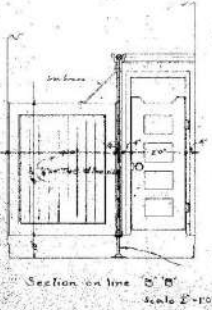
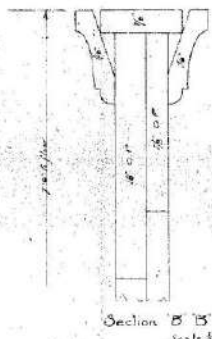
THE A. T. & S. F. RY. CO.
 Los Angeles Division
 Drawing No 85-8304
 PROPOSED CHANGES TO TOILETS, AT LA GRANDE DEPOT.
 LOS ANGELES CAL.

Los Angeles Cal.
 February 10/1914

Approved
 Chief Engineer



General specifications notes
 The drawings referred to and these specifications are intended to embrace all the labor and materials necessary for the erection and completion of the changes, to fall in with all the parts and finish in a good and workable manner. To the entire satisfaction of the Chief Engineer of the A. T. & S. F. Ry. Co.
 All permits and certificates required by the local authorities, must be procured by the contractor at his expense. All plumbing, sewer and other parts of the plumbing work shall be done in strict accordance with the code and practice in accordance with the ordinance for plumbing in the City of Los Angeles Cal.
 Finish and install complete eight new Regal Siphon Jet Closets to cost \$20.00 each. One three stall extra Urinals No. 8 large size cost \$100.00. One Lavatory No. 376 cost \$100.00. Range wash two Ball Traps with hinges 1/2" x 20" Range 2". All above fixtures are selected from James B. Clow and Son catalogue. Through equivalents will be allowed. In each of the Urinals furnish a galv. wire netting cover of mesh to fit inside of urinals.
 Urinals and small cabinets need partitions, doors and hardware as shown on plans and details.
 Same to be Oregon Pine No. 1 quality, surfaces.
 The new brick walls to be carried up to the under side of roof of open waiting room and present walls of Tower to be carried on to base. 6" x 8" old walls put together with pipe separators on each side. All new work and old work to be carried with present building.
 Plaster all new work and damage done to old walls and leave all perfect at completion of work.
 The two new windows are to correspond with present windows, only they will have square headed sashes shown on elevation.
 All new wood work to be painted three coats of lead and linseed oil to finish as will be selected, old wood work and plastered walls and ceiling to have five coats.
 Floor of toilets to have 4" concrete with 1/2" cement top finish blocked off in squares about 20" square, same to incline towards best limits.
 Brick walls 7 1/2" high to be finished with 3/4" of the Keene Cement Mortar, rubbed finish and scored or imitation tile 10" x 10" than hair with two coats of pure white lead in equal parts of pure linseed oil and turpentine, applied so brush marks will show as little as possible, three coat flat work, and both coat with Sherwin-Williams White Enamel and left in a gloss.
 All excess plumbing fixtures shall remain the property of the Railway Co. same to be removed with as much care as possible by contractor.



Plan of A-A
 Scale 1/4" = 1'

MM-8304

85-8304

