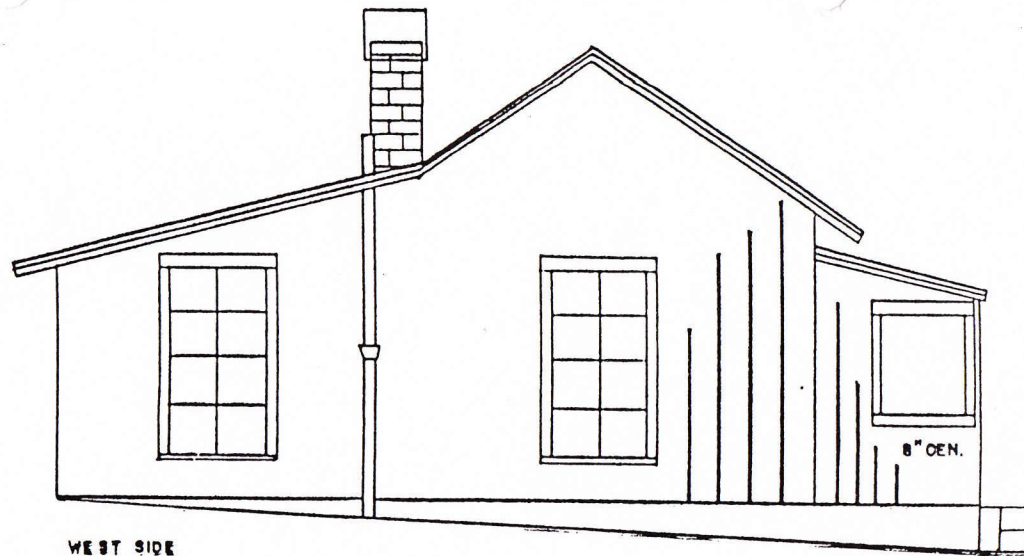
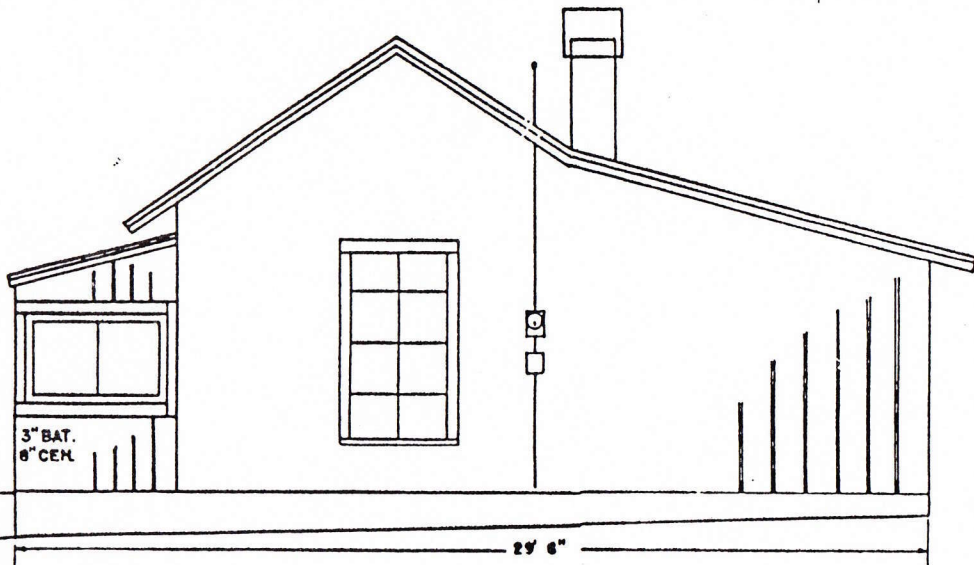


SOUTH SIDE

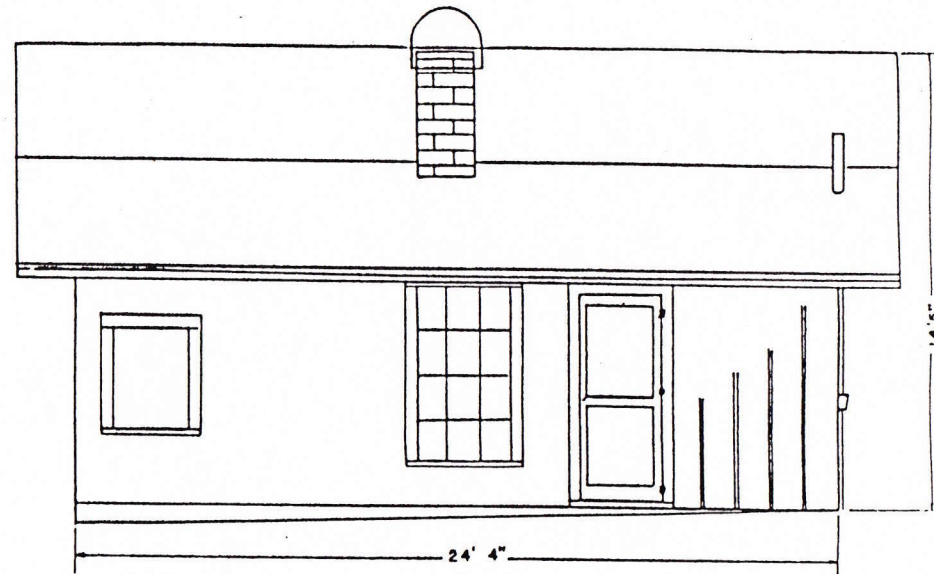


WEST SIDE

SIDING: BOARD & BATTEN
 3" BATTENS - 1' CENTERS, UNLESS NOTED



EAST SIDE



NORTH SIDE

Not to scale

AT&BF SECTION HOUSE - SUMMIT CALIFORNIA

SCALE: 1/4" = 1'

⑧

G.C. BASSETT

1910 - 1972