

86

85

84

83

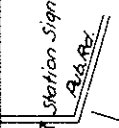
82

81

← To Tulsa

To Chanute →

MOHAWK M.P. 85.84



Pub. Rd. Xing
(B-581-C)

Rock Cr.

Pub. Rd. Xing
(B-580-V)

Fish Sig.
N Yale St.

(B-579-B)

Cool Cr.

Mohawk Park Xing.
N 30th St.
(B-578-U)

Fish Sig.

Gr. 84.4, 6x6x47, R.C. Bx.

Pub Rd Xing

Mohawk Pk Entr

Bx. 83.8, 10x5x45 R.C. Bx.

Gr. 83.4, 4x2, B.D.P.T.

Pub. Rd. Xing U.P.
(B-577-M)

Bx. 83.1, 1.487kg. B.D. on C. Piers
E. Ap. 90 B.D.P.T. N. P. 48 B.D.P.T.

Pub. Rd. Xing. 46705
(B-576-F)

Bx. 82.7, 2, Del. 4, 4x4x705 Tr. Bx.

A. Xing.
(B-575-Y)

Bx. 82.2, 6x5x37 R.C. Bx.

A. Xing.
(B-574-S)

Bx. 82.0, 43' x 27' x 30' C.M.P. Arch

Mingo Rd.

Pub. Rd. Xing
(B-573-X)

Fish Sig.

Pub. Rd. Xing. Gr.
(B-572-U)

Bx. 81.53, 3x3x295 Tr. Bx.

Pub. Rd. Xing. N 36th St.
(B-571-W)

Fish Sig.

#78
3'00'
I: 35°47'30"

#77
1°30'
I: 19°19'

0.709

628.3

626.3

0.706

614.3

612.3

0.167

616.3

0.70

600.3

0.04

0.50

598.8

604.6

0.40

597.4

0.04

596.9

0.10

599.3

599.3

0.231

596.3

0.0

0.5714

604.3

604.3

0.5294

76

75

74

73

72

71

To Tulsa

To Chanute

*72
1°00'
Sp. 110'

El. 1 1/2"
Sp. 140'

El. 3 1/2"
Sp. 360'

El. 1 1/2"
Sp. 110'

*71.
1°00'
I=9°10'

*70.
2°00'48"
I=50°16'

Speed 25-25 across
Broadway & Main Sts.

661.3

0.0

661.3

0.4667

675.3

0.231

672.3

0.60

654.3

0.1667

650.3

0.109

645.3

0.60

630.3

0.280

623.3

0.1833

A-6, Red Xing.
(B-563-E)

B-75-9, 30' x 48' C.I.P.

P-1, Xing
(B-562-E)

B-75-6, 2' x 16' T.Bx.

B-75-4, 3' x 3' x 40' T.T.Bx.

B-75-7, 10' x 6' x 25' R.C.Bx.

A-6, Red Xing.
Fish Sig
(B-561-D)
S L & Y L 74 B

Flash Sig. f Bell

B-74-4, 1-48' x 30' C.I.P.

B-74-A, 1-48' x 36' C.I.P.

B-74-1, 8'6" x 34' C.M.P.

A-6, Red Xing.
(B-560-L)

B-73-6, 0-61' 10" x 8' x 27' R.C.Bx.

P-1 Xing.

B-73-3, 8' x 5' x 42' R.C.Bx.

B-73-O, 0-61' 6" x 3' x 30' A.C.

A-6, Red Xing. Gr.
(B-559-P)

B-72-8, 4' x 4' x 45' R.C.Bx.

B-72-5, 2' x 1' x 82' T.Bx.

B-72-3, 3' x 2' x 29' 35' T.T.Bx.

Broad Ave.

City Limits

B-72-0, 0-61' 12" x 8' x 43' R.C.Bx.

COLLINSVILLE
M.P. 71.62

B-71-7, 24' x 56' C. Culv.
(Martin)

A-6, Red Xing, Main St.

Broadway St.

A-6, Red Xing, Walnut St.

(B-636-U)

Fish. Sigs.

www.us.189

N.M.

Pub Xing.

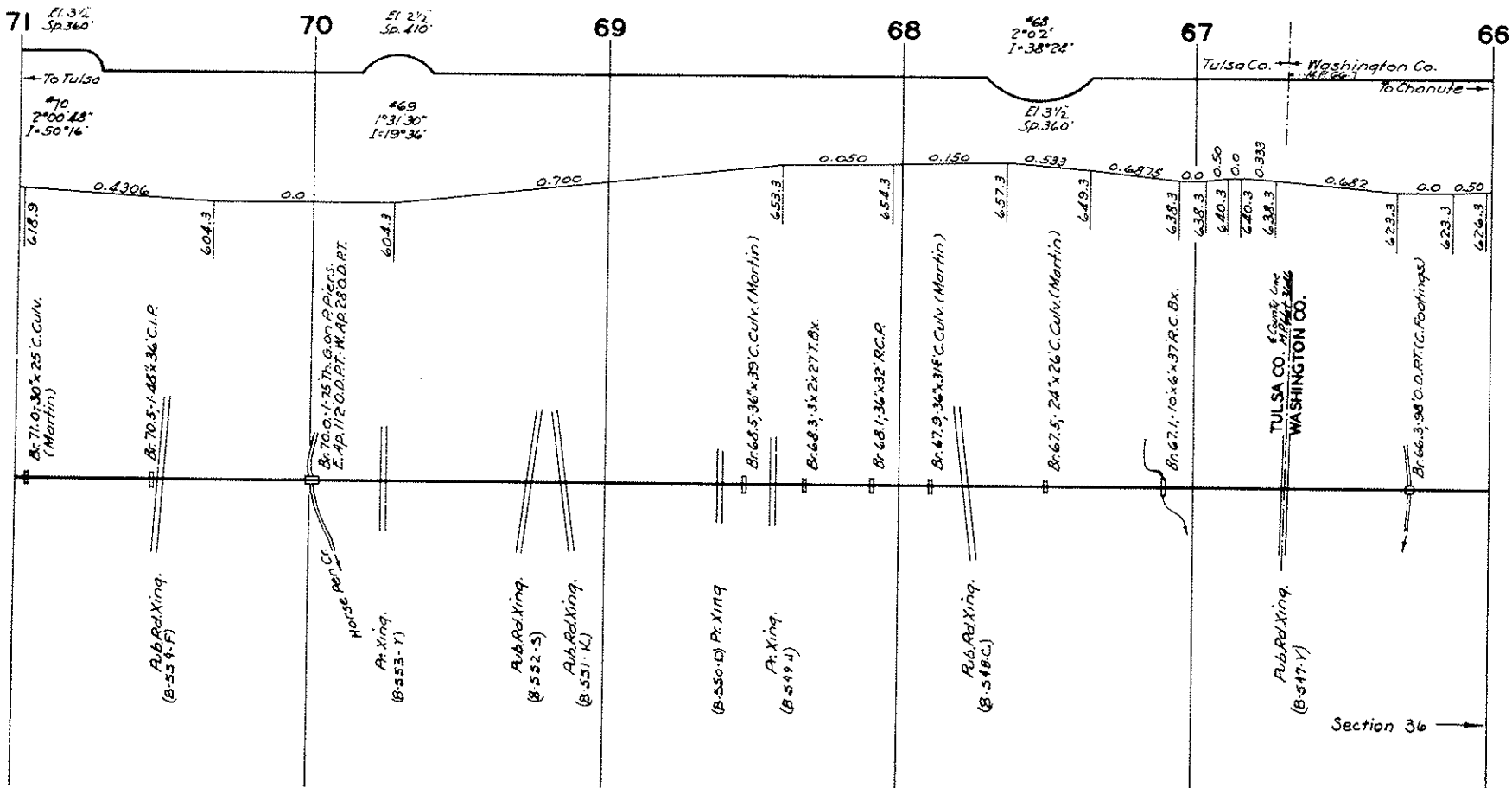
B-71-4, 36' x 102' C.I.P.

A-4, 4' x 90' T.Bx. Exp. Lt.

City Limits

B-71-2, 10' x 6' x 31' R.C.Bx.

P-1, Red Xing



71 E1.3 1/2
Sp. 360'

To Tulsa

70
2°00'48"
I=50°76'

70 E1.2 1/2
Sp. 410'

69
1°31'30"
I=19°36'

69

68
E1.3 1/2
Sp. 360'

67
E1.3 1/2
Sp. 360'

Tulsa Co. → Washington Co.
412°26.1'

To Chanute

0.4306 0.0 0.700 0.050 0.150 0.533 0.6875 0.0 0.50 0.0 0.333 0.682 0.0 0.50

618.9 604.3 604.3 653.3 654.3 657.3 649.3 638.3 638.3 640.3 640.3 638.3 623.3 623.3 626.3

Br. 71.0: 30' x 25' C. Culv. (Martin)

Br. 70.5: 1.48 x 36' C.I.P.

Br. 70.0: 1.75 Th. 6.00 P. Piers. 2. Ap. 112.0 D. P.T. W. AP 28.0 D. P.T.

Br. 66.5: 36' x 39' C. Culv. (Martin)

Br. 68.3: 3 x 2 x 27 T. Bx.

Br. 68.1: 36' x 32' RC. R.

Br. 67.9: 36' x 31 1/2' C. Culv. (Martin)

Br. 67.5: 24' x 26' C. Culv. (Martin)

Br. 67.1: 10' x 6' x 37' RC. Bx.

Br. 66.3: 98' O.D. P.T. (C. Footings)

Pub. Rd. Xing. (B-553-F)

Horse Rd. Cr.

Pr. Xing. (B-553-Y)

Pub. Rd. Xing. (B-552-S)

Pub. Rd. Xing. (B-551-K)

Pr. Xing (B-550-D)

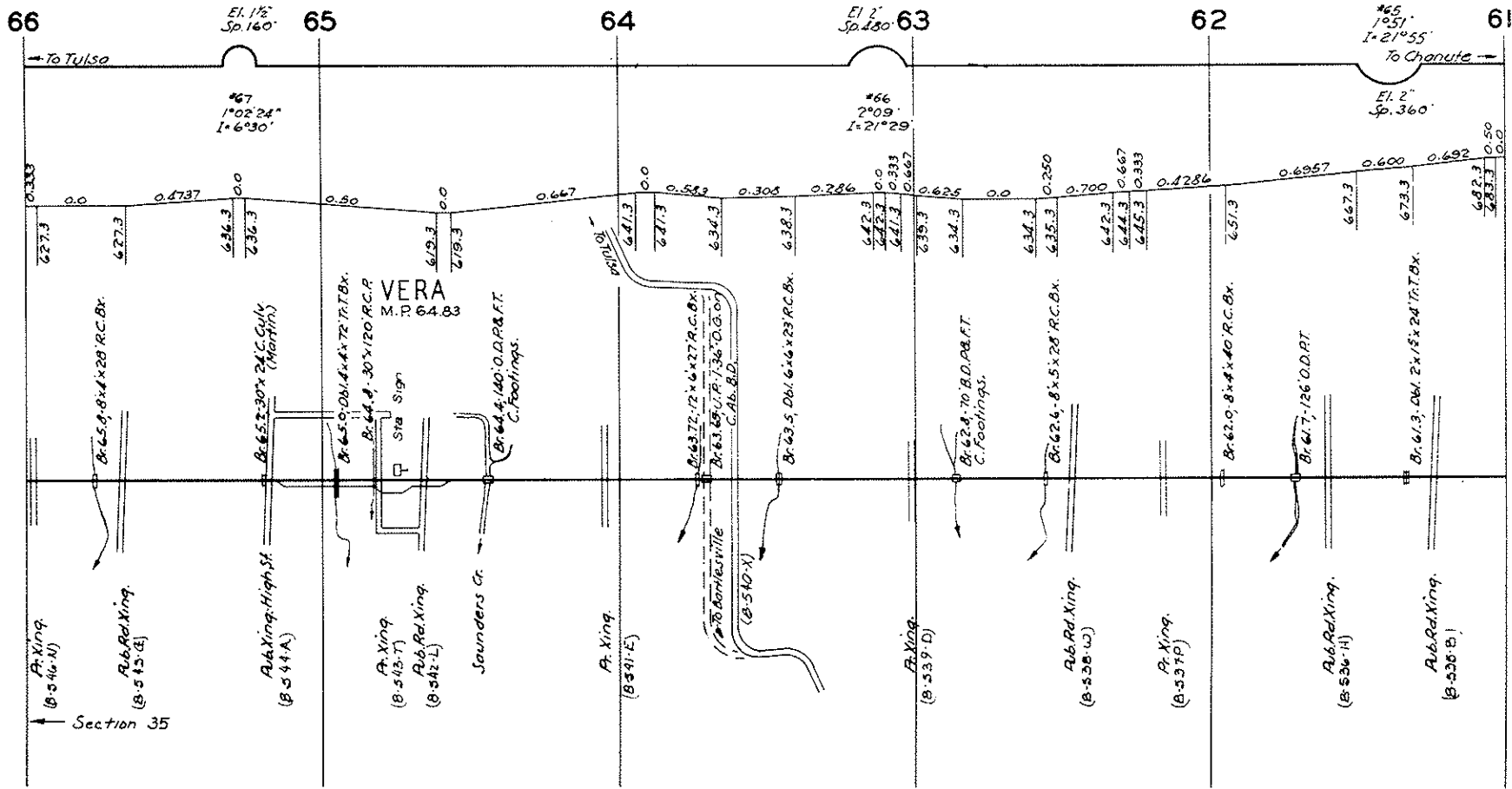
Pr. Xing. (B-549-J)

Pub. Rd. Xing. (B-548-C)

Pub. Rd. Xing. (B-547-V)

TULSA CO. WASHINGTON CO.

Section 36



66

El. 1 1/2 Sp. 160

65

64

El. 2" Sp. 180 63

62

*65 1°05' I=21°55'

61

→ To Tulsa

To Chanute →

0.300

0.0

0.4737

0.0

0.263

0.0

0.50

0.0

0.123

0.0

0.667

0.0

0.473

0.0

0.582

0.305

0.286

0.0

0.423

0.0

0.333

0.0

0.625

0.0

0.343

0.0

0.250

0.700

0.667

0.333

0.0

0.4286

0.0

0.6957

0.600

0.692

0.0

0.623

0.0

0.833

0.0

A. Xing (B-544-N)

A.6 Red Xing (B-543-G)

A. Xing High St (B-544-A)

Br. 65.0-08.4x4x72 T.T.Bx.

Br. 64.9-30x120 R.C.R.

VERA M.P. 64.83

Br. 64.4-140x0.0 D.R.F.T. C. Footings.

Br. 63.5-08.6x23 R.C.Bx.

A. Xing (B-541-E)

Br. 62.4-70 B.D. P.R.F.T. C. Footings.

Br. 62.4-8x5x28 R.C.Bx.

A. Xing (B-539-D)

A.6 Red Xing (B-538-W)

A. Xing (B-537-F)

A.6 Red Xing (B-536-W)

A. Xing (B-536-H)

A.6 Red Xing (B-536-B)

Section 35

61

60

59

58

57

56

→ To Tulsa

462
100'
1:16°06'
El. 1'
Sp. 210

To Chanute →

El. 2'
Sp. 360'
#64
2°02'36"
1:27°04'

El. 2'
Sp. 290'
#63
2°06'54"
1:20°14'

683.3
677.3
672.3
681.3
682.3
682.3

0.700

660.3
659.3

0.0

659.3
658.3
652.3
652.3

0.545
0.0

0.6875

0.3158

0.182

0.294

0.0

Br. 60.8, 42'0.0 P.& FT.
C. Footings

Br. 60.6, 2'4" x 26" T.Bx.

A. Xing.
(B 524-U)

Pub. Rd. Xing.
(B 523-M)

Br. 59.7, 84' B.O.R.T.

(B 522-F) A. Xing.

Br. 59.5, 30' x 26" C.Culv.
(Martin)

Br. 59.2, 2-3/8" x 36" C.I.P.

(B 531-F) Pub. Rd. Xing.

Br. 59.0, 6'4" x 59" R.C. Bx.

Br. 58.9, 42' x 58" C.I.P. 42" x
16" R.C. P. Ext.
(B 530-S)

(B 529-K) 2
Br. 58.55, 11' x 38" T.Bx.

(B 528-P)
Br. 58.4, 24' x 100" C.Culv.
(Martin)

(B 527-U) Pub. Rd. Xing.
Double Cr.

RAMONA

City Limits

Delaware Ave.

Sto. Sign
Power Line Xing.

Osage Ave.

Goodwin Ave.

City Limits

Dom.

J. Fork Double Cr.

Br. 57.9, 1-30' x 30" C.Culv. (Martin)

(B 523-V) Pub. Rd. Xing.
J. Fork Double Cr.

Br. 57.7, 8' x 8' x 42" R.C. Bx.

Pub. Rd. Xing.
(B 524-M)

Br. 57.2, 1-24' x 24" C.I.P.
Br. 57.1, 1-24' x 12" C.I.P. 2' x 3' x 3' No. Bx.
E. End & 1-24' x 19" Vitr.

Br. 56.8, 70'0.0 P.& FT.

Br. 56.6, 1-30' x 26" C.Culv. (Martin)

Br. 56.5, 2-42' x 36" C.I.P.

Pub. Rd. Xing.
(B 523-C)

Br. 56.1, 1-18' x 1' x 26" Tr. T.Bx.

City Limits

City Limits

City Limits

City Limits

City Limits

City Limits

City Limits

City Limits

City Limits

City Limits

City Limits

City Limits

City Limits

City Limits

City Limits

City Limits

City Limits

City Limits

City Limits

City Limits

City Limits

City Limits

City Limits

City Limits

City Limits

City Limits

City Limits

City Limits

City Limits

City Limits

City Limits

City Limits

City Limits

City Limits

City Limits

City Limits

City Limits

City Limits

City Limits

City Limits

City Limits

City Limits

City Limits

City Limits

City Limits

City Limits

City Limits

City Limits

City Limits

City Limits

City Limits

City Limits

City Limits

City Limits

City Limits

City Limits

City Limits

City Limits

City Limits

City Limits

City Limits

City Limits

City Limits

City Limits

City Limits

City Limits

City Limits

City Limits

City Limits

City Limits

City Limits

City Limits

City Limits

City Limits

City Limits

City Limits

City Limits

City Limits

City Limits

City Limits

City Limits

City Limits

City Limits

City Limits

City Limits

City Limits

City Limits

City Limits

City Limits

City Limits

City Limits

City Limits

City Limits

City Limits

City Limits

City Limits

City Limits

City Limits

City Limits

City Limits

City Limits

City Limits

City Limits

City Limits

City Limits

City Limits

City Limits

City Limits

City Limits

City Limits

City Limits

City Limits

City Limits

City Limits

City Limits

City Limits

City Limits

City Limits

City Limits

City Limits

City Limits

City Limits

City Limits

City Limits

City Limits

City Limits

City Limits

City Limits

City Limits

City Limits

City Limits

City Limits

City Limits

City Limits

City Limits

City Limits

City Limits

City Limits

City Limits

City Limits

City Limits

City Limits

City Limits

City Limits

City Limits

City Limits

City Limits

City Limits

City Limits

City Limits

City Limits

City Limits

City Limits

City Limits

City Limits

City Limits

City Limits

City Limits

City Limits

City Limits

City Limits

City Limits

City Limits

City Limits

City Limits

City Limits

City Limits

City Limits

City Limits

City Limits

City Limits

City Limits

City Limits

City Limits

City Limits

City Limits

City Limits

City Limits

City Limits

City Limits

City Limits

City Limits

City Limits

City Limits

City Limits

City Limits

City Limits

City Limits

City Limits

City Limits

City Limits

City Limits

City Limits

City Limits

City Limits

City Limits

City Limits

City Limits

City Limits

City Limits

City Limits

City Limits

City Limits

City Limits

City Limits

City Limits

City Limits

City Limits

City Limits

City Limits

City Limits

City Limits

City Limits

City Limits

City Limits

City Limits

City Limits

City Limits

City Limits

City Limits

City Limits

City Limits

City Limits

City Limits

City Limits

City Limits

City Limits

City Limits

City Limits

City Limits

City Limits

City Limits

City Limits

City Limits

City Limits

City Limits

City Limits

City Limits

City Limits

City Limits

City Limits

City Limits

City Limits

City Limits

City Limits

City Limits

City Limits

City Limits

City Limits

City Limits

City Limits

City Limits

City Limits

City Limits

City Limits

City Limits

City Limits

City Limits

City Limits

City Limits

City Limits

City Limits

City Limits

City Limits

City Limits

City Limits

56

55

54

53

52

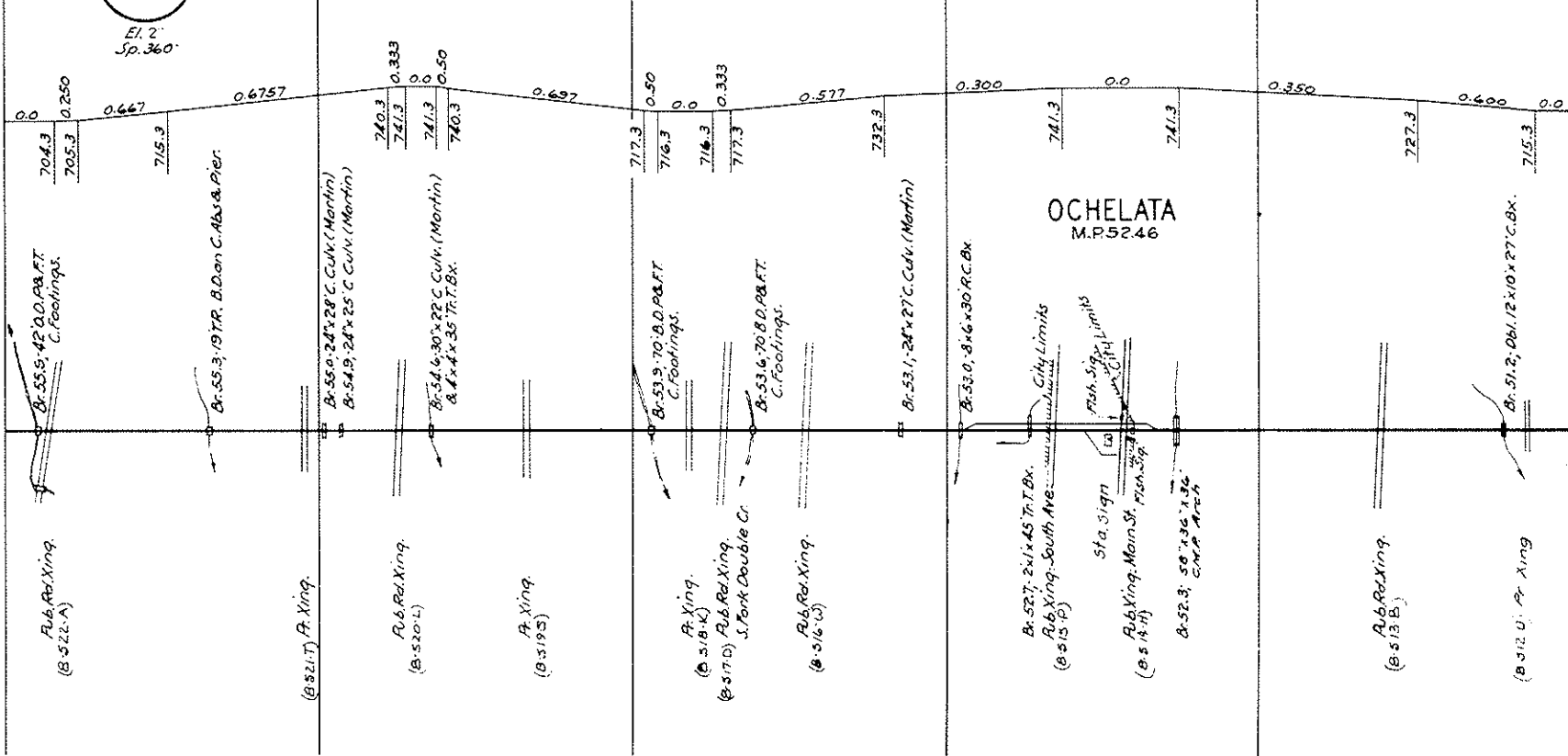
51

← To Tulsa

To Chanute →

461
2°03'
1-29°10'

El. 2"
Sp. 360"



OCHELATA
M.P. 52.46

Rub. Rd. Xing.
(B-522-A)

(B-521-T) F. Xing.

Rub. Rd. Xing.
(B-520-L)

F. Xing.
(B-519-S)

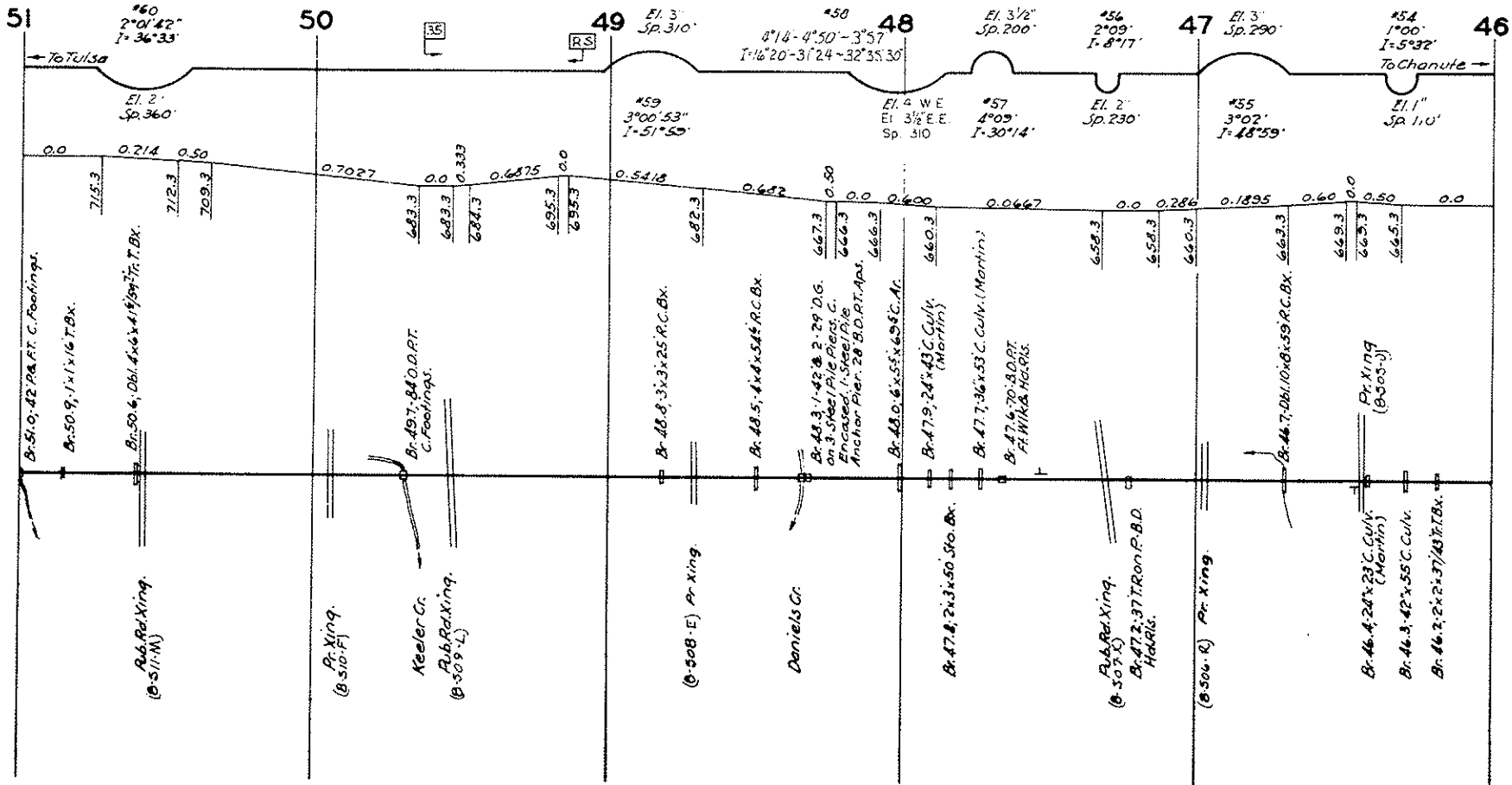
A. Xing.
(B-518-K)
Rub. Rd. Xing.
(B-517-D)
S. Tank Double Cr.

Rub. Rd. Xing.
(B-516-U)

B-527, 2' x 45' Tr. T. Bx.
Rub. Xing. South Ave.
(B-515-P)
Sta. Sign
Rub. Xing. Main St.
(B-514-H)
Fish Sign Limits
Fish Sign
B-523, 50' x 34' x 36'
C.M.P. ARCH

Rub. Rd. Xing.
(B-513-B)

(B-512-U) F. Xing.



To Tulsa

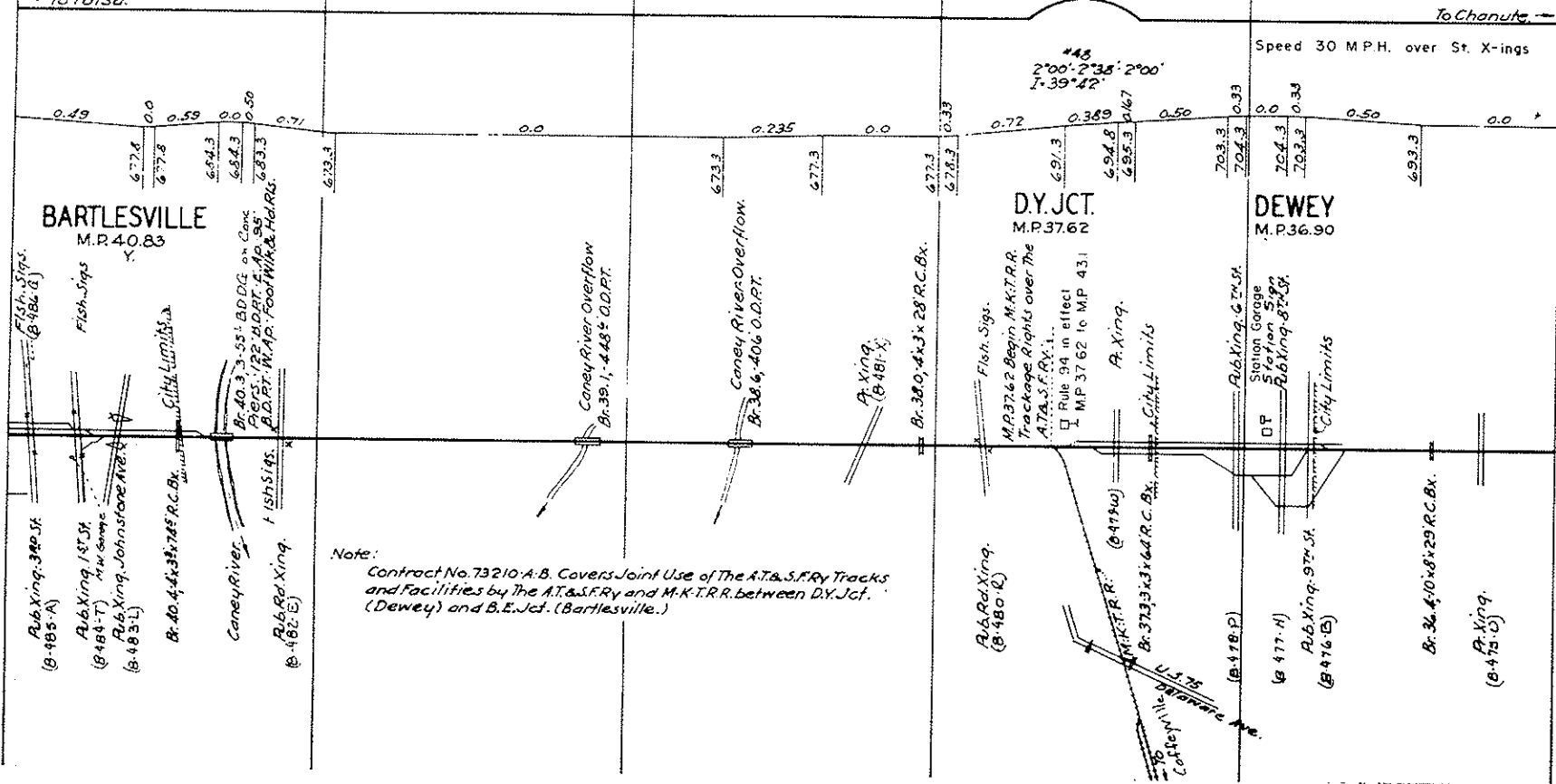
To Chanute

El. 2" - 2 1/2" - 2"
Sp. 150' - 70' - 150'

→ To Tulsa.

To Chanute →

Speed 30 MPH. over St. X-ings



Note:
 Contract No. 73210 A-B. Covers Joint Use of The A.T.&S.F.Ry Tracks
 and Facilities by The A.T.&S.F.Ry and M.K.T.R.R. between D.Y. Jct.
 (Dewey) and B.E. Jct. (Bartlesville.)

443
 2°00' - 2°35' - 2°00'
 I - 39°42'

0.49 0.0 0.59 0.0 0.50 0.71
 6.77.6 6.77.8 6.64.3 6.84.3 6.83.3
 6.72.3 6.77.3 6.72.3 6.78.3 6.72.3 6.78.3 7.03.3 7.04.3 7.03.3 6.93.3

BARTLESVILLE
 M.P. 40.83

D.Y. JCT.
 M.P. 37.62

DEWEY
 M.P. 36.90

Rub Xing 340 St. (B-485-A)
 Fish Signs (B-486-A)
 Rub Xing 187 St. (B-484-T) NW Corner
 Rub Xing Johnson Ave. (B-483-L)
 Br. 40.4x3x745 R.C. Bx
 City Limits
 Coney River
 Fish Signs
 Rub Rd Xing (B-482-E)

Coney River Overflow
 Br. 39.1 - 448' O.D.P.T.
 Coney River Overflow
 Br. 38.0, 406 O.D.P.T.

A. Xing
 (B-481-X)

Br. 38.0, 4x3x28 R.C. Bx
 Fish Signs
 M.P. 37.62 Begin M.K.T.R.R. Trackage Rights over the A.T.&S.F.Ry. I.
 Rule 94 in effect
 M.P. 37.62 to M.P. 43.1
 A. Xing
 City Limits

Rub Xing (B-480-L)
 M.K.T.R.R. (B-475-J)
 Br. 37.3x31x64 R.C. Bx
 U.S. 75
 Station Garage
 Station Sign
 Rub Xing 874 St. (B-477-A)
 Rub Xing 974 St. (B-476-E)
 City Limits
 Br. 36.4x10x29 R.C. Bx
 Rub Xing (B-475-D)

36

← To Tulsa.

35

34

#47
1°01'
I-10°30'

33

El. 1 1/2"
Sp. 270'
#46
1°02'
I-8°21'

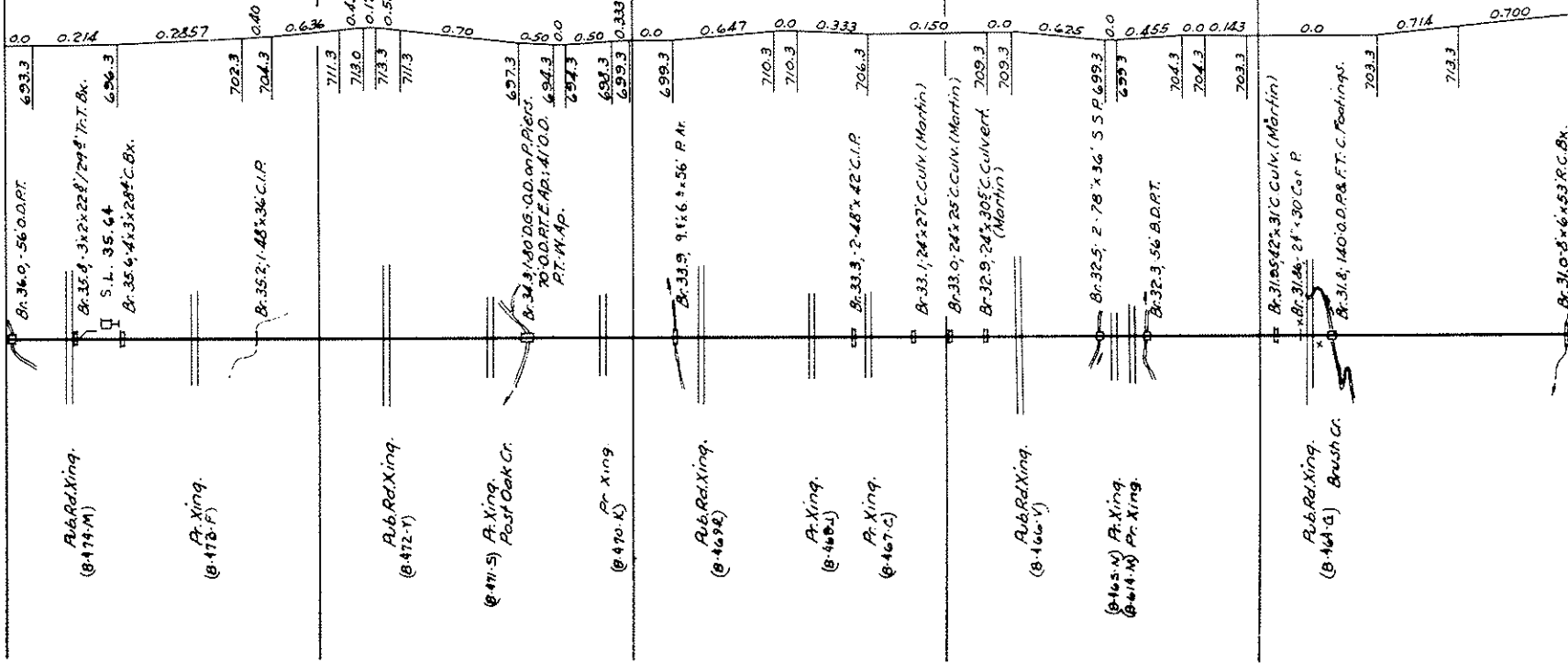
32

#45
2°08'
I-17°11'

31

30

To Chanute. →



To Tulsa.

To Chanute.

E1. 3 1/2' Sp. 320'

E1. 1 1/2' Sp. 180'

E1. 1 1/2' Sp. 180'

#44
2°03'
I = 17°24'

#43-A
1°30'
I = 40°38'03"

#43
1°30'
I = 42°48'12"

0.70
755.3
258.3
758.3
0.0
0.40
752.3
0.80
746.7
0.0
746.7

0.70
766.3
766.3
0.0
0.70
749.2
0.60
740.1

0.0

COPAN
M.P. 2999

Rub.Rd.Xing.
(B-463-A)

Br. 30.5, 18'x30' Con.P

Br. 30.3, 15'x1x30.7 Bx.

City Limits

Br. 30.08 12'x48' C.M.P

STATION SIGN

Br. 30.1, 12'x48' C.M.P

Br. 30.03, 24'x24' C.M.P

Br. 29.9, 18'x30' Con.P

Br. 29.9, 4x2x22.6 Bx.

Br. 29.9, 6x2x37.7 C.Bx.

City Limits

Rub.Rd.Xing.
(B-461-L)

Golden Ave.

Br. 29.6, 70' O.D.P.T.

At. Xing
(B-460-E)

Rub.Rd.Xing.
(B-459-K)

+ 3611.5 • END LINE CHANGE •

+ 2760.2

Br. 28.5, 3-5x4x74' R.C.Bx.

Br. 28.1, 3 5x4x86' R.C.Bx

Pooler Creek

Br. 27.9, 158' P.C.Bm.-B.D/Hdrl
3 span on steel Lt. & Rt

Br. 27.7, 3x3x105' R.C.Bx.

Cotton Creek

Br. 27.4, 263' P.C.Bm.-B.D/Hdrl
5 span on steel Lt. & Rt

Br. 26.6, 8x5x138' R.C.Bx

26

25

24

23

22

21

← To Tulsa

Washington Co. Okla

Montgomery Co. Ks.

To Chanute

El. 1 1/2'
Sp. 180'

El. 1 1/2'
Sp. 180'

440
1°30'
I=39°16'58"

39
0°30'
I=1°30'

38
2°05'
I=1°30'

#42
1°30'
I=19°01'18"

41
1°30'
I=21°12'04"

El. 1 1/2'
Sp. 180'

El. 1 1/2'
Sp. 40'

El. 3 1/2'
Sp. 250'

Br. 25.9, 8x4x156' R.C. Bx.

Br. 25.7, 10x6x148' R.C. Bx.

Br. 25.5, 3-8x8x125' R.C. Bx.

Br. 24.8, 10x7x75' R.C. Bx.

Br. 24.3, 3-5x4x29' R.C. Bx.

Br. 23.8, 4x4x47' R.C. Bx.

Br. 23.4, 8x8x100' R.C. Bx.

Br. 23.1, 156' P.C. Bm. -B.D./Hdrl. LI. & RI.

OKLAHOMA
KANSAS

Br. 22.7, 3-4x4x98' R.C. Bx.

Br. 22.4, 2-5x4'x40' C.M.P.
Hd. Rls.

CANEY
M. P. 22.05

Flash Sigs
Pub. Xing. 6TH Ave
(6-907-X)

Br. 21.9, 18x1x51' T.Bx.

Pub. Xing. 1ST Ave.
Pub. Xing. Taylor Ave.
(6-907-J)
(6-906-C)

Br. 21.4, 8x8x58x25' 142'
T.T. Bx.

Br. 21.25, 3x2x26' T.Bx.
Br. 21.2, 3x3x33' T.Bx.

Br. 21.1, 18'x24' C.M.P.
Flash Sigs

State Line M.P. 22.73
Reservoir

1438 City Limits
Pub. Xing.

STATION Sign
Br. 22.02, 2x4x91' T.Bx. X
Br. 21.9, 2x1x65' T.Bx.
(6-908-B)
Pub. Xing

Br. 21.8, 18'x24' C.M.P.

Br. 21.4, 8x8x58x25' 142'
T.T. Bx.

Br. 21.25, 3x2x26' T.Bx.
Br. 21.2, 3x3x33' T.Bx.
Flash Sigs
(6-905-V)

0.75 0.45 0.58 0.0 0.22 0.221 0.18

740.1
+3869

726.9

730.8

730.9

730.9

736.2

733.2

Br. 21.2, 28x6' IRON P.-B.D. FINIK & HARRIS
Br. 21.15 56'x34' C.M.P.

Moss Ave

21

20

Automatic Block

19

El. 312
Sp. 270

18

El. 316
Sp. 220

17

El. 315
3°30'
I°60'42'

16

← To Tulsa.

To Chanute →

#37
2°04'
I°16'57'

#36
2°01'36"
I°23'06"

El. 5'
Sp. 300

0.3472

0.60

0.70

0.286

0.0

0.34

0.229

0.56

735.7

0.0

0.05

739.5

0.70

765.7

798.2

779.5

770.5

762.5

765.6

768.5

(6-904-N) Pr. Xing.

(6-903-G) Cheyenne Cr.
Pr. Xing

(6-902-A) Pr. Xing.

(6-901-T) Pub. Rd. Xing.

(6-900-U) Pr. Xing.

(6-899-U) Pr. Xing.

(6-898-M) Pub. Rd. Xing.

(6-897-F) Pr. Xing.

(6-896-T)

(6-895-S) Pr. Xing.

(6-894-K) Pr. Xing.

(6-893-D) Pr. Xing.

(6-892-W) Pr. Xing.

(6-891-P) Pub. Rd. Xing.

Cotton Cr.
Sig. #161

(6-890-I) Pr. Xing

Br. 20.9.3x3x59 T.Bx

Pr. Xing

Br. 20.7.1-105 T.H.G. C. A. & Piers B.D. 28' B.D. RT. APS.

Br. 20.5.30' x 48' C.M.P.

Br. 20.1.061.8 x 5.23 R.C. Bx.

Br. 19.3.061.6 x 6 x 44 R.C. Bx.

Br. 18.7.28' B.D. PT. TR.

Br. 18.1.561.6 x 5.22 R.C. Bx.

Br. 17.9-Overhead Viaduct
Hwy. No. 166, P.C. D.G. Soars
Paved/Asph. Piers

Br. 17.6.35x3x47 T.Bx.

Br. 17.5.1x1 x 20 T.Bx.

Br. 17.4.061.8 x 6 x 32 R.C. Bx.

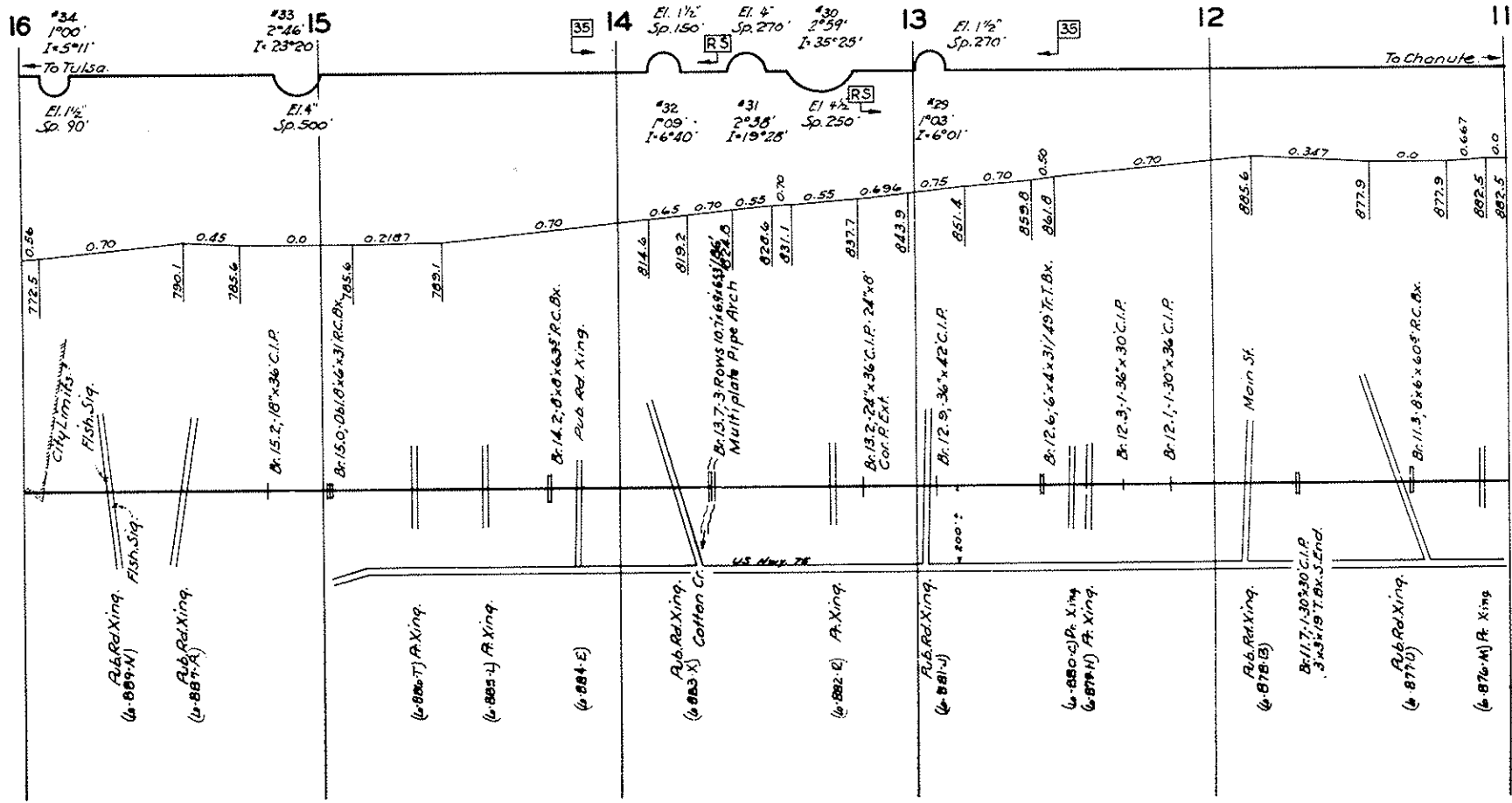
Br. 17.1.4x2 x 26 T.T. Bx.

Br. 17.0.15x1 x 16 T.T. Bx.

Br. 16.5.8 x 8 x 31 R.C. Bx.

Br. 16.1.40.0.6. B.D. on C. Piers
No. B.D. P.C. RT. APS. 28' B.D. RT.
N. Ap. Foot Wks. & Helix.

Ch. Limits



11

10

9

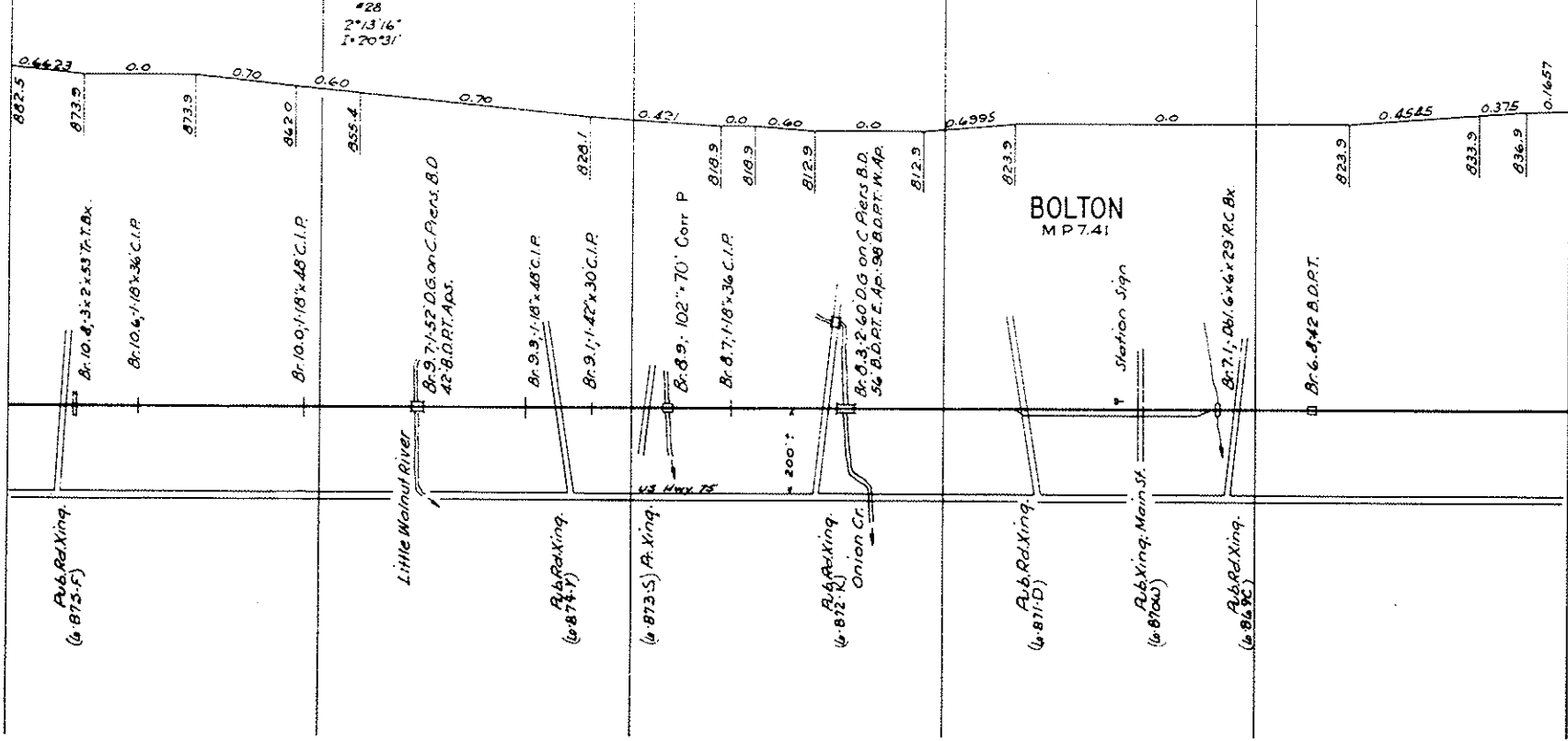
8

7

6

→ To Tulsa

To Chanute →



E1. +
3p. 480'

#28
2°13'16"
1+20'31"

BOLTON
MP 7.41

Station sign

Little Walnut River

US Hwy 25

200'

Pub. Rd. Xing.
(4-873.5-F)

Pub. Rd. Xing.
(4-874.1)

(4-873.5) A. Xing.

Pub. Rd. Xing.
(4-872.8) K.
Onion Cr.

Pub. Rd. Xing.
(4-871.0) D)

Pub. Xing. Main St.
(4-870.0)

Pub. Rd. Xing.
(4-869.0)

0.4423 0.0 0.70 0.60 0.70 0.42 0.0 0.60 0.0 0.4995 0.0 0.4545 0.375 0.1457

882.5 873.9 873.9 862.0 855.4 820.1 818.9 818.9 812.9 812.9 823.9 823.9 823.9 833.9 836.9

Br. 10.4, 3x2x53 Tr. T. Bx.

Br. 10.6, 1-18x36 C.I.P.

Br. 10.0, 1-18x48 C.I.P.

Br. 9.7, 1-52 D.G. on C. Piers, B.D. 42' B.D.P.T. Aprs.

Br. 9.9, 1-18x48 C.I.P.

Br. 9.1, 1-42x30 C.I.P.

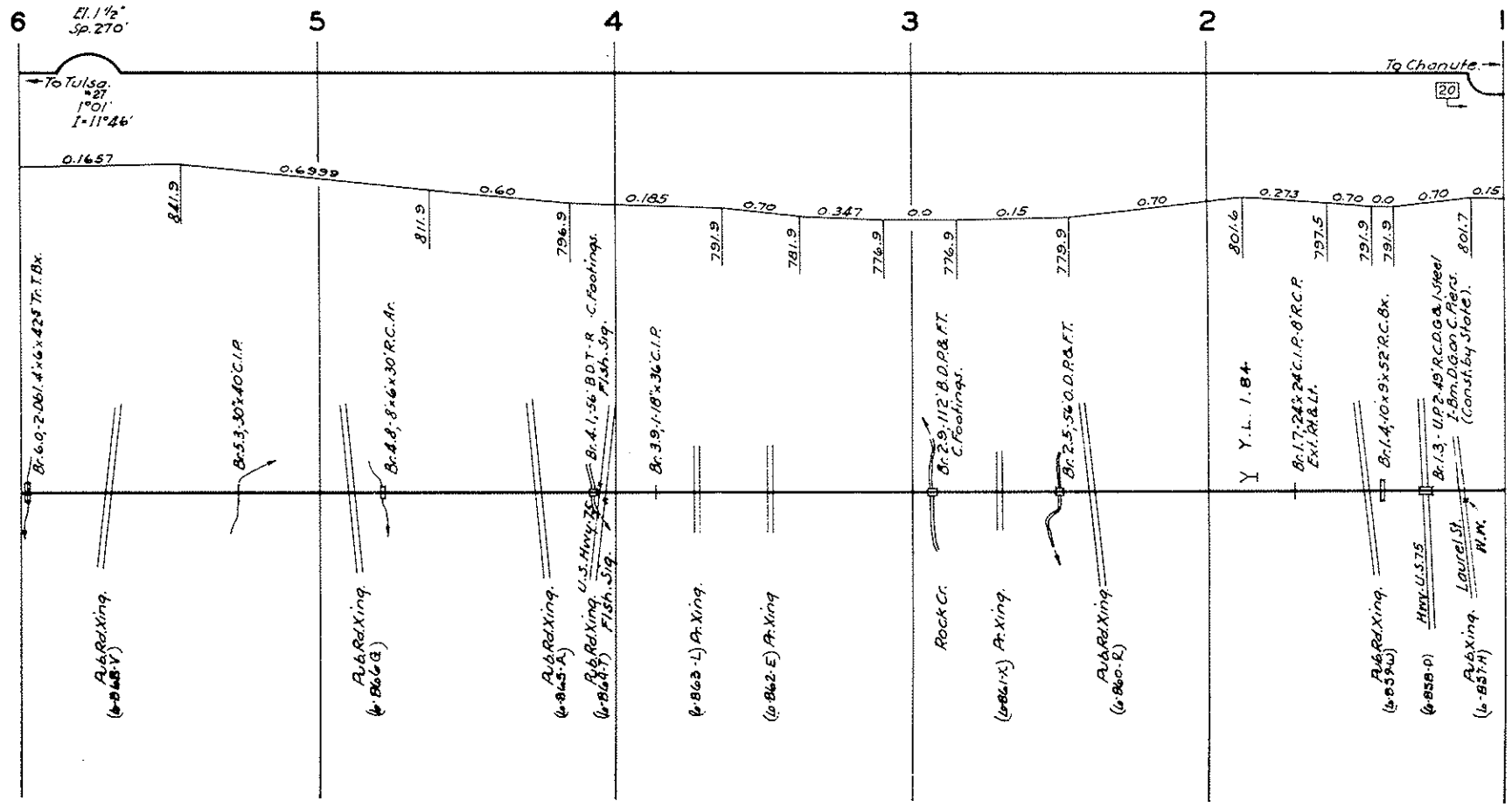
Br. 8.9, 102'x70' Corr P

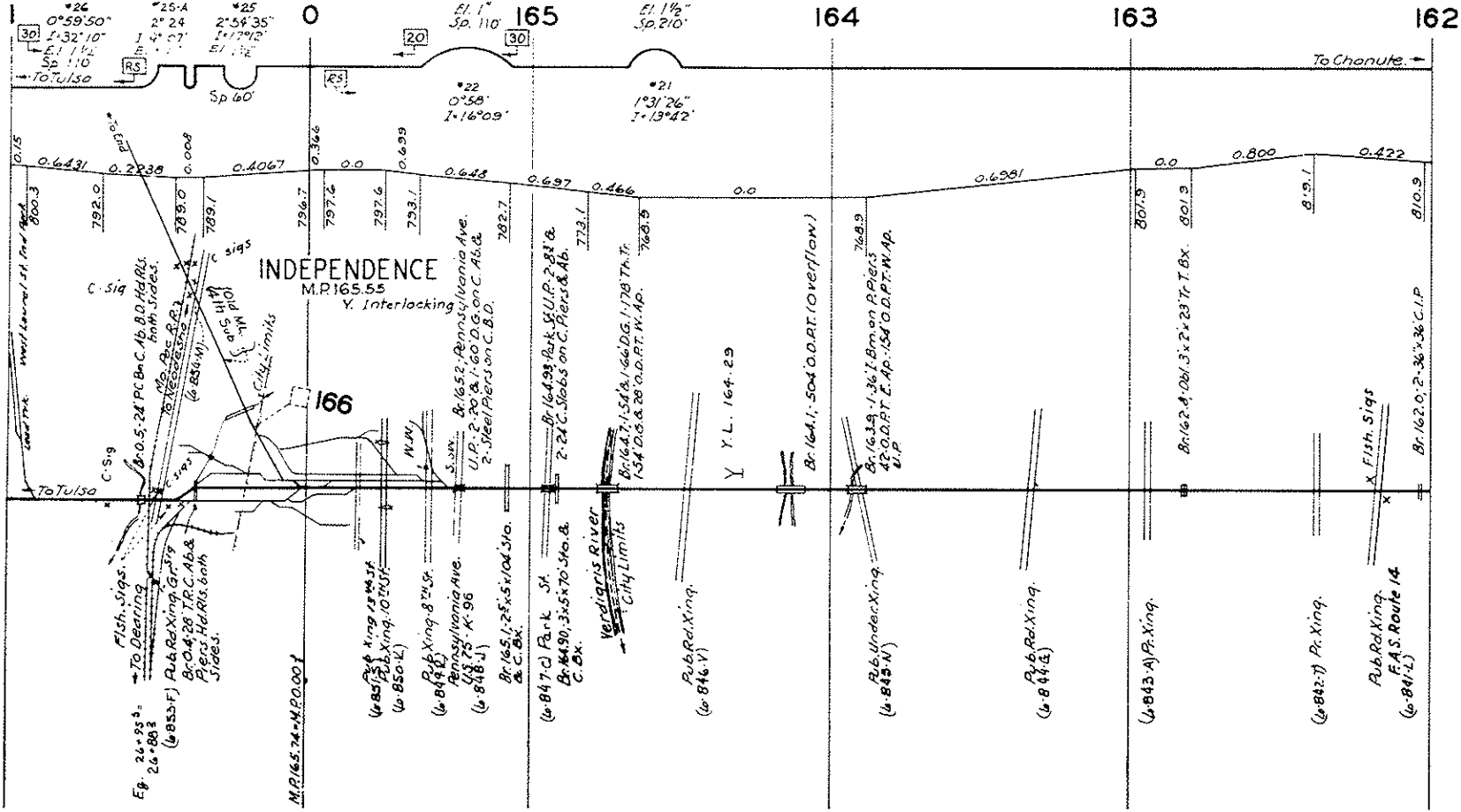
Br. 8.7, 1-18x36 C.I.P.

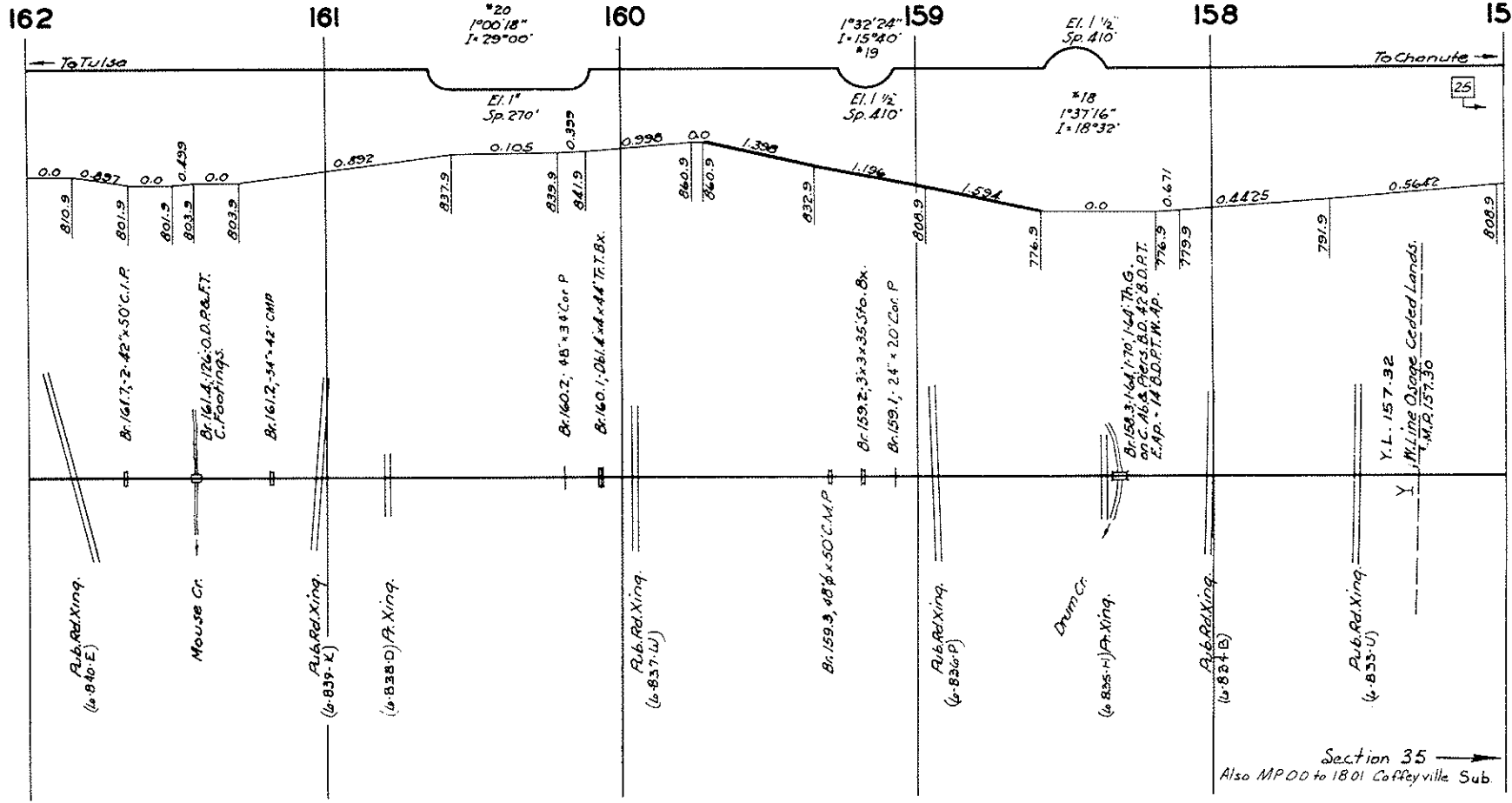
Br. 8.3, 2-60 D.G. on C. Piers, A.D. 56' B.D.P.T. Aprs. 98' B.D.P.T. W. Apr.

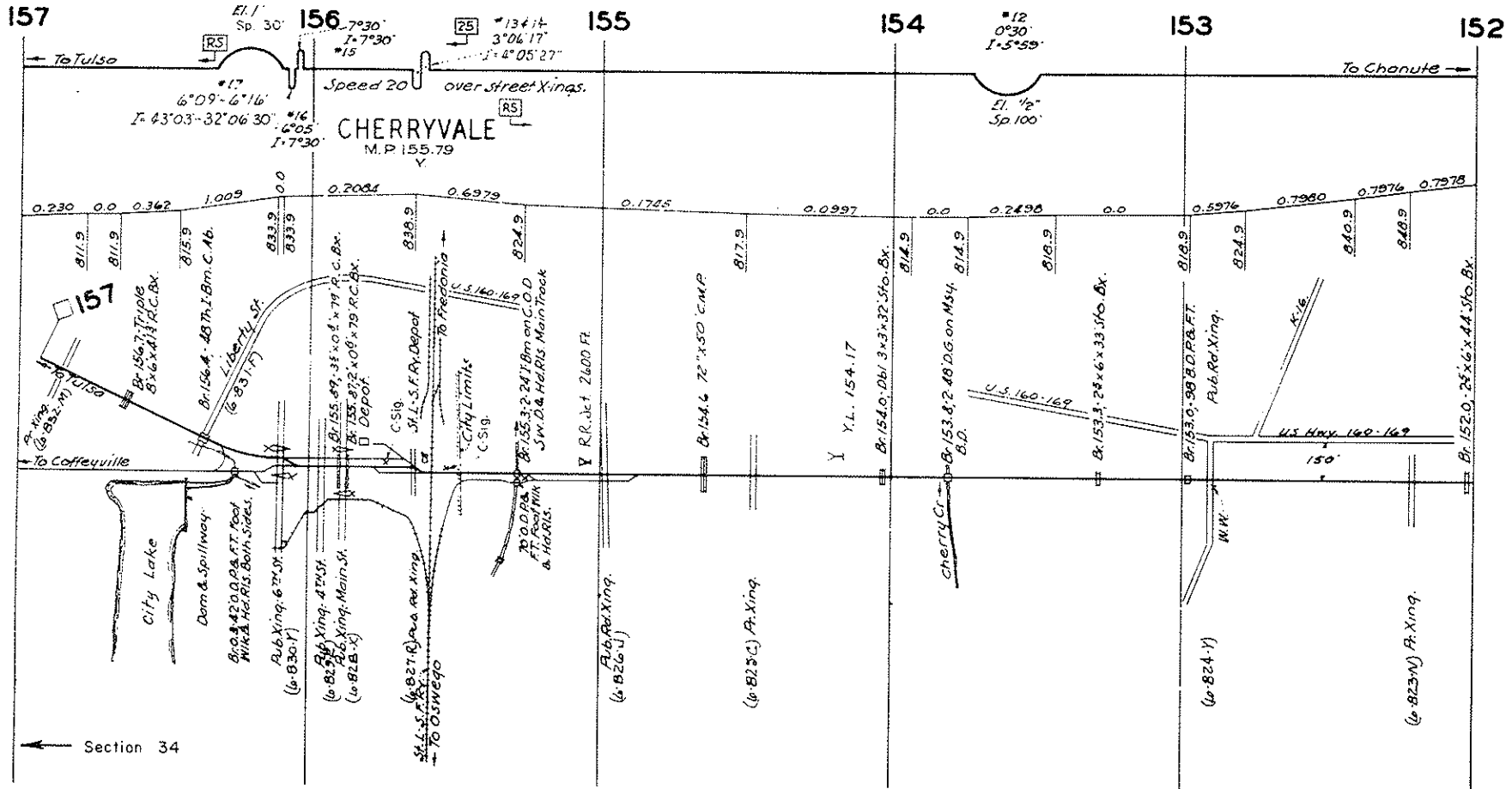
Br. 7.1, 2x1-20x6x6x29 R.C. Bx.

Br. 6.4, 42' B.D.P.T.









152

151

150

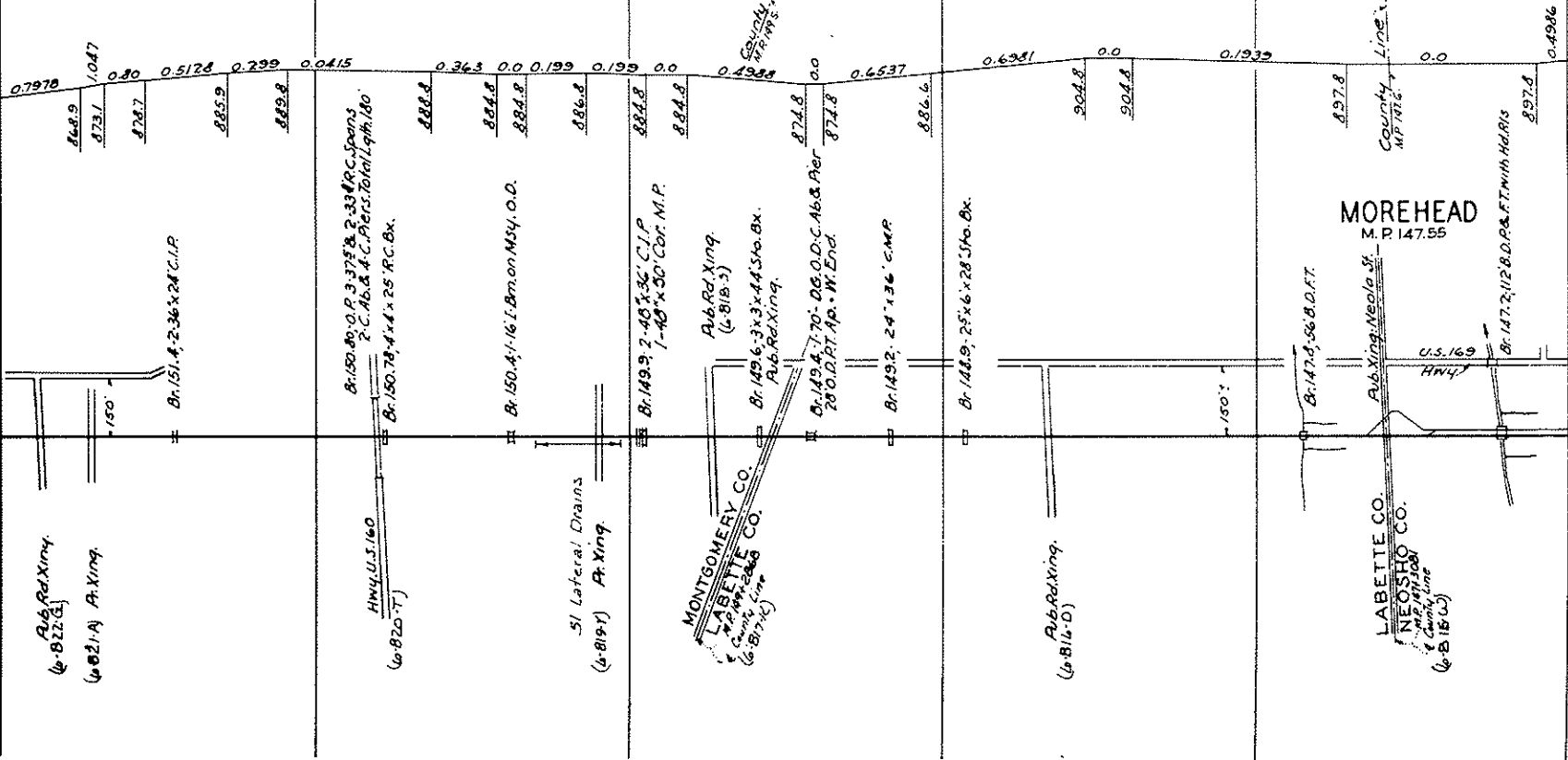
149

148

147

← To Tulsa

Neasho Co. To Chanute



Pub. Rd. Xing.
(4-822-G)

(4-821-A) A. Xing.

Br. 151, 4'-2.36' x 24" C.I.P.

HWY, U.S. 160
(4-820-T)

Br. 150, 80'-0" x 3'-37.5" x 2'-33" R.C. Spans
2-C. Ab. & A-C. Piers. Total Length, 180'

Br. 150, 78'-4" x 4' x 25" R.C. Bx.

Br. 150, 4'-1.16' I. B. mon. Msy. O.D.

51 Lateral Drains
(4-819-Y) A. Xing.

Br. 149, 2'-40" x 36" C.I.P.
1-40" x 50" Cor. M.P.

MONTGOMERY CO.
LABETTIE CO.
C.P. 149
(4-818-X)

Pub. Rd. Xing.
(4-818-B)

Br. 149, 6'-3" x 3'-4.4" Sfo. Bx.

Pub. Rd. Xing.

Br. 149, 4'-70" O.G. O.D. C. Ab. & Pier.
28' O.D. RT. Ap. - W. End.

Br. 149, 2'-24" x 136" C.M.P.

Pub. Rd. Xing.
(4-816-D)

Br. 148, 9'-25" x 6' x 28" Sfo. Bx.

150'

Br. 147, 8'-56" B.D.F.T.

LABETTIE CO.
NEASHO CO.
U.S. 169
(4-815-U)

Pub. Xing. Neola St.

MOREHEAD
M.P. 147.55

U.S. 169
HWY

Br. 147, 2'-12" B.D.P. & F.T. with Hd. R/S

County M.P. Int.

County Line

897.5

0.4986

Montgomery Co.

Labette Co.

Labette Co.

Neasho Co.

0.7978

1.047

0.80

0.5128

0.299

0.0415

0.363

0.0

0.199

0.199

0.0

0.4988

0.0

0.6537

0.6381

0.0

0.1939

0.0

0.4986

897.8

0.4986

147

146

145

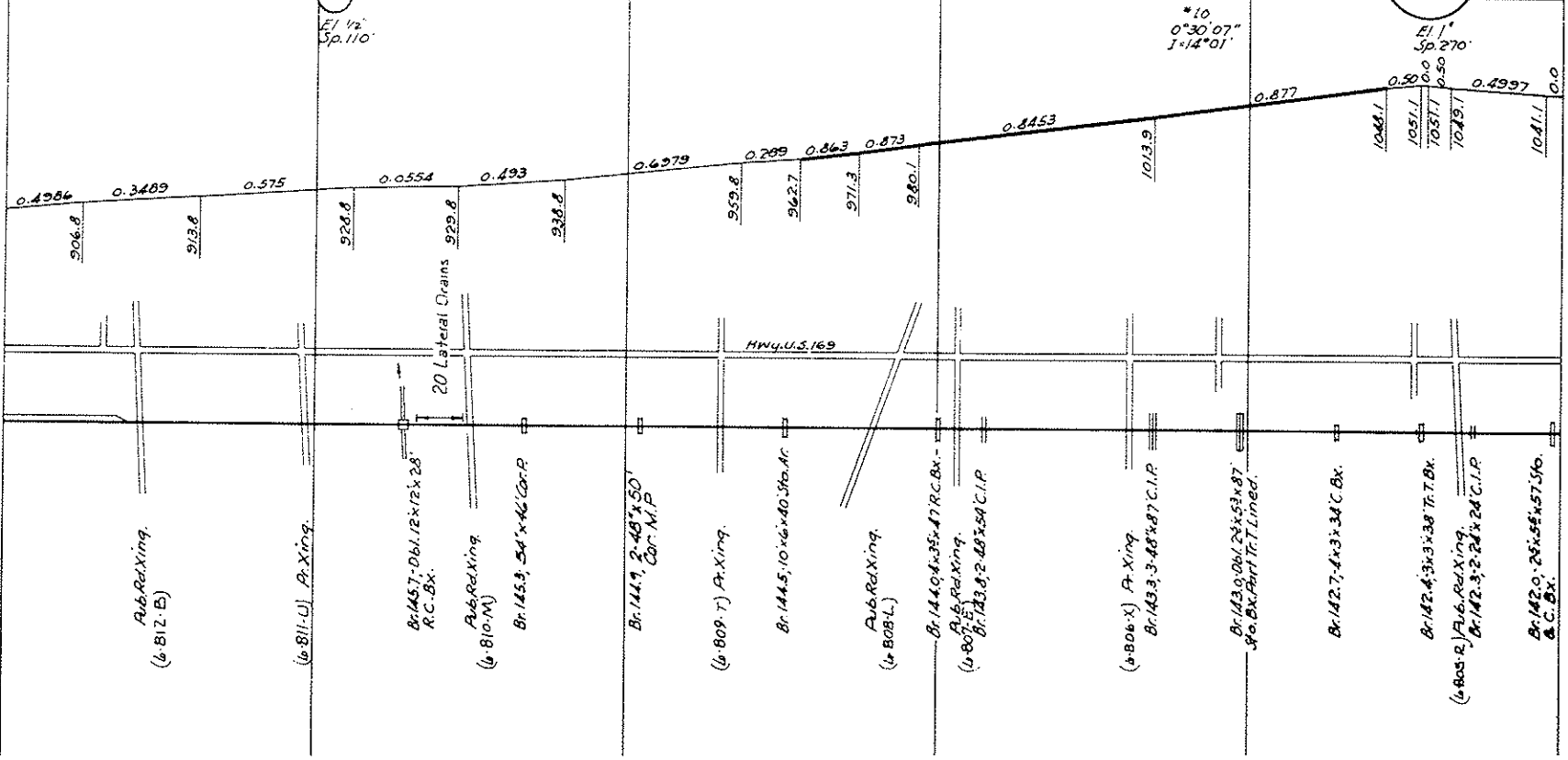
144

143

142

To Tulsa

To Cherokee



*11
0°20'
1°51'
El. 1/2"
Sp. 110"

El. 1/2"
Sp. 100"
*10
0°30'07"
1°14'01"

1°01'12"
1°13'40"
*9
El. 1"
Sp. 270"

Sub. Red Xing.
(6-812-B)

(6-811-U) Pr. Xing.

Br. 145.7-061.12x12x28'
R.C. Box.

Sub. Red Xing.
(6-810-M)

Br. 145.3-54"x46" Cor. P.

Br. 144.9-2-48"x50"
Cor. M.P.

(6-809-T) Pr. Xing.

Br. 144.5-10"x6x40.360.A.C.

Sub. Red Xing.
(6-808-L)

Br. 144.0-35x47 R.C. Box -
Sub. Red Xing.
(6-807-E)

Br. 143.8-2-48"x54 C.I.P.

(6-806-X) Pr. Xing.
Br. 143.3-3-48"x87 C.I.P.

Br. 143.0-061.28x58x87
90. Box. Part Tr. T. Lined.

Br. 142.7-4x3x34 C. Box.

Br. 142.4-3x3x38 Tr. T. Box.
Sub. Red Xing.
(6-805-R)

Br. 142.3-2-24"x24" C.I.P.

Br. 142.0-25x55x57.56
C. Box.

HWY. U.S. 169

20 Lateral Drains

0.4984 0.3489 0.575 0.0554 0.493 0.6979 0.209 0.863 0.873 0.3453 0.877 0.50 0.50 0.4997 0.0

906.8 913.8 920.8 929.8 938.8 952.8 962.7 971.3 980.1 1013.9 1048.1 1051.1 1057.1 1063.1 1041.1

142

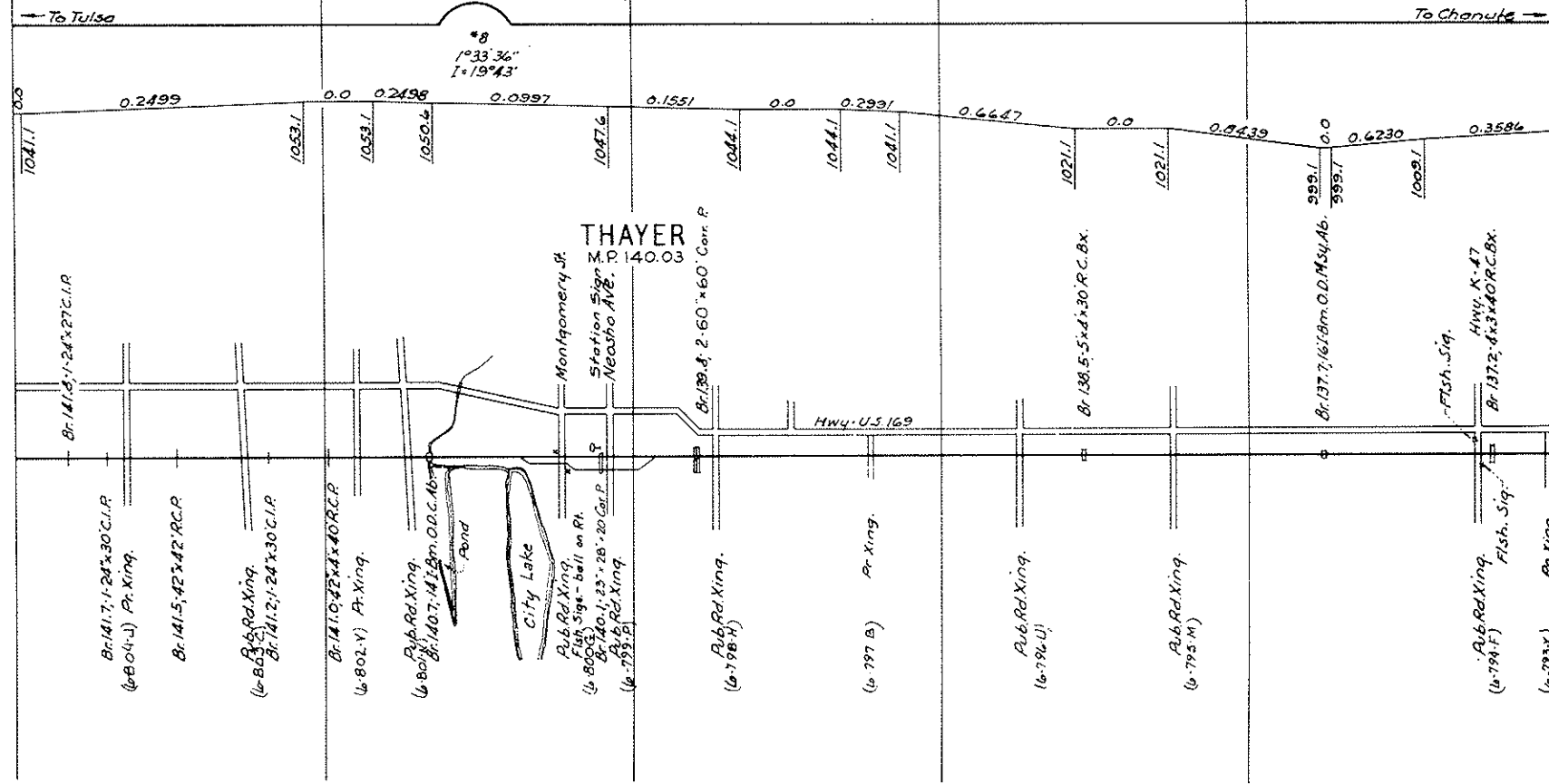
141

140

139

138

137



To Tulsa

To Chanute

THAYER
140.03

Hwy. U.S. 169

Montgomery St.
Station Sign
Neasho Ave.

Br. 138.8, 2.60' x 60' Corr. P.

Br. 138.5, 5' x 4' x 30' R.C. Bx.

Br. 137.7, 16' (8m. O.D.) M. 34' x 46' x 399.7

Br. 137.2, 4' x 3' x 40' R.C. Bx.
Fish Sign
Hwy. K-47

