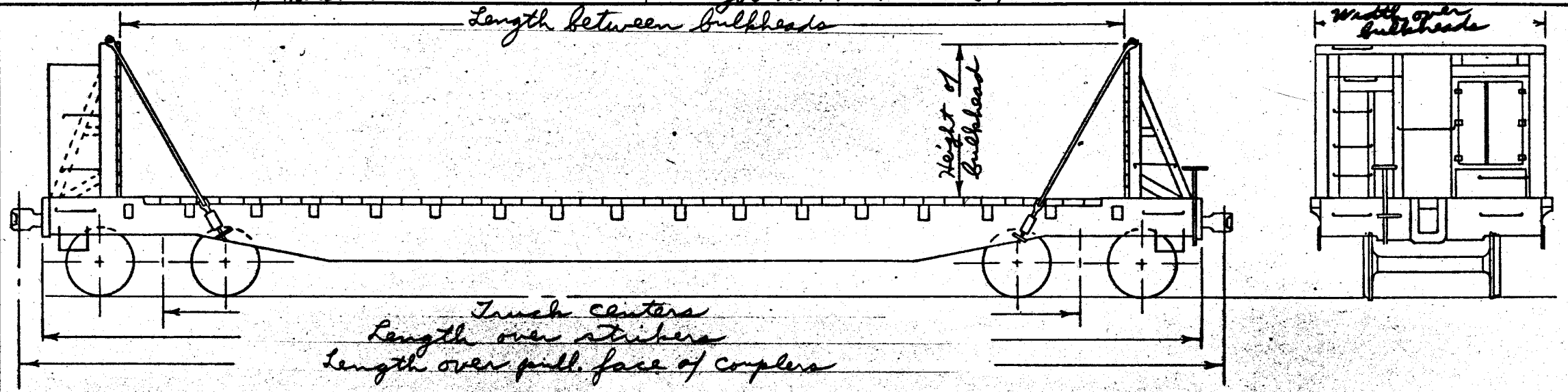


DATE OF REVISION	

FT-5 Wallboard loading service	Series 91315-91329	15 cars
AAR Mech. designation FMS	93100-93119	20 cars
Body drg. list 3221	Built new (Topeka shops)	1955
Truck drg. list 3222	Modified to Wallboard service	1959 & 60
Bill of Material 883	Job nos. F-472 & 541	



Car diagram FOLIO 211/4  
PAGE F-27-B



* Nominal Capacity	100000 lbs.	Gen. Arr't. drg.	26-A-5069	Truck Man. Arr't. drg.	20-B-2381
Load limit	118300 lbs.	Gen. Arr't. drg. of bulkhead	26-A-5425	Wheel base of truck	5' 6"
Light weight of car	58700 lbs.	Drg. list of bulkhead application	none	Truck centers	43' 3"
		B. of M. for bulkhead application	1028	Wheel base of car	48' 9"
Length -- *between bulkheads	48' 6"	Underframe -- Cast steel	26-A-4715	Kind of truck -- ASP A-3	3-11/16" spr. travel
*over end sills	53' 6"	Handbrake -- Equiper	26-B-4334	axle -- 5-1/2 x 10	drg. 20-D-3046
*over strikers	54' 3"	Draft gear -- Westinghouse	NY-11-F	Wheels -- 33" dia. 1-wear wrought steel	
*over pull. face of cplers.	56' 9"	Coupler yoke -- vertical	Y-40 H.T.	Brake beam -- #18 unit type	
Width -- *over deck	10' 6"	Coupler -- Rotary "E" head		Truck springs -- #3010, 3079, 3073	
*over bulkheads	10' 1"	Lading anchors -- Keystone	26-B-5061	Journal box lid -- articulated	20-B-2447
*over side sill plates	9' 3"	Air brakes -- Westinghouse "AB"	10 x 12	Friction casting -- A-3 45 degree	20-B-1949
*extreme over decking	10' 6"			Trucks -- ASF with 45 degree A-3 snubber	
Height -- *bulkhead				side frame CS-2872	drg. 20-B-2380
series 91315-91329	6' 6"			bolster	CS-2871
series 93100-93119	6' 8"				drg. 20-B-2379
*rail to top of deck	3' 5-1/2"				
*rail to extreme width	3' 5-1/2"				
*extreme to top of bulkhead					
series 91315-91329	9' 11-1/2"				
series 93100-93119	10' 1-1/2"				

\* Information for the Official Railway Equipment Register

ISSUE DATE