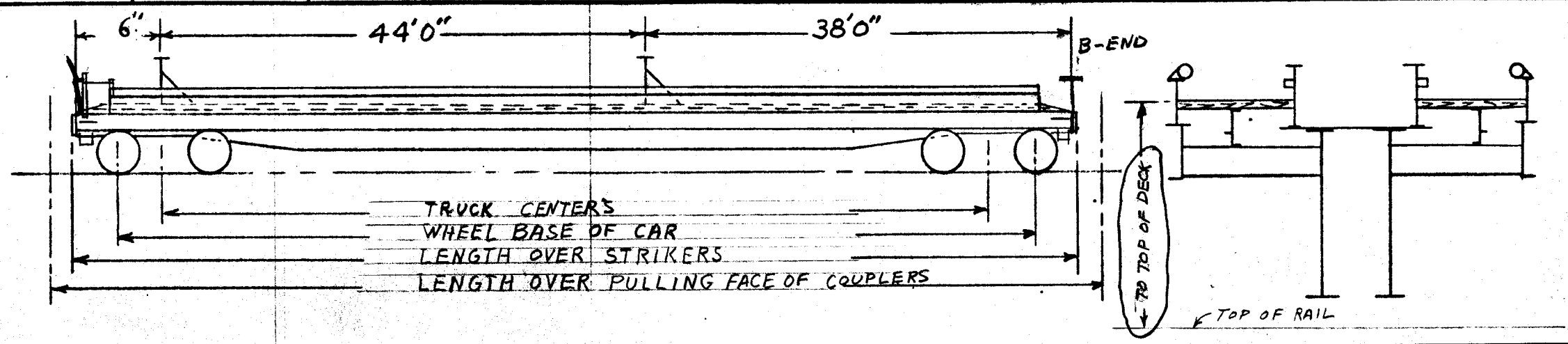


FIRST ISSUE DATE AUG. 15, 1958	FT-11 (SEMI-TRAILER LOADING) TOFC	90100-90124	25 CARS	FOLIO 211 (4)
DATE OF REVISION	AAR MECHANICAL DESIGNATION FC	BUILT NEW 1958, MODIFIED 1966		
6-28-61	ORIGINAL DRG. LIST	2-DL-3358	ORIGINAL B. OF M. 1010	
4-1-74	MODIFICATION DRG. LIST	2-DL-3565	MODIFICATION B. OF M. 1206	PAGE F-33
	TRUCK DRG. LIST	2-DL-3312	MODIFIED PER JOB F-962	



* NOMINAL CAPACITY	117000 LBS.	GENERAL ARRANGEMENT	2-D-46-2810	WHEEL BASE OF TRUCK	5'8"
LOAD LIMIT	117400 LBS.	CROSS SECTION	2-C-46-2639	TRUCK CENTERS	76'0"
LIGHTWEIGHT	102600 LBS.	TYPICAL SECTION AT CTR OF CAR	2-C-46-2814	WHEEL BASE OF CAR	81'8"
LENGTH-* OVER END SILLS	88'0"			AXLES	ROLLER BEARING 6X11
OVER STRIKERS	88'8"			WHEELS - ONE-WEAR WROT STEEL	33" DIA.
* OVER PULLING FACE OF CPLRS	91'3-3/4"	HAND BRAKE (DROP SHAFT TYPE)	UNIVERSAL	BRAKE BEAM	UNIT TYPE #24
		COUPLER-TYPE "E" ROTARY SWIVEL SHANK		LOAD SPRINGS	3-11/16" TRAVEL D-5
WIDTH-* BETWEEN GUARD RAILS	8'5-1/2"	COUPLER YOKE	Y-30 VERTICAL SWIVEL	RIDE CONTROL SPRINGS	*3010, 3011
OVER SIDE SILLS	9'6"			ROLLER BEARINGS - TIMKEN "AP"	
OVER TOP OF SIDES	9'6"			FRICION CASTING	20-B-1949
* EXTREME @ GUARD RAILS	9'6"			CENTER PLATE	14" DIA.
				TRUCKS - BUCKEYE WITH A-3 SNUBBERS	
HEIGHT-* RAIL TO TOP OF DECK	3'10-13/16"	BRIDGE PLATE	2-D-41-6612	TRUCK ARRGT.	20-A-2711
* TO EXTREME WIDTH	4'3-5/16"			SIDE FRAME CS-2945	20-A-2709
* EXTREME @ GUARD RAIL	4'7"			AAR CODE	F7A-02DN-2A
HITCH IN RAISED POSITION	7'9-13/16"			BOLSTER CS-2946	20-A-2710
				AAR CODE	NONE

\* INFORMATION FOR THE RAILWAY EQUIPMENT REGISTER