

DATE OF REVISION	

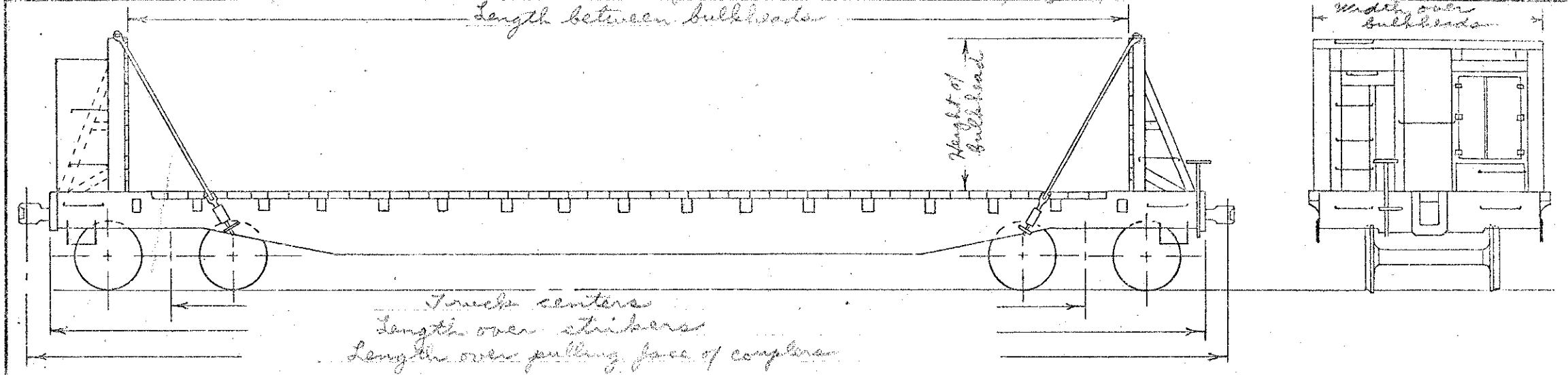
FT-W Wallboard loading service
 AAR Mech. designation FMS
 Body drg list 3092
 Truck List 3093
 Bill of material 780

Series 91990-91999
 92077-92086
 92102-92111
 92113-92117
 Modified to wallboard service 1955, 56, 60

28 Cars
 10 cars
 94 cars
 5 cars



car diagram FOLIO 211/4
 PAGE F-20-A



* Nominal Capacity	100000 lbs.	Rev. draft drg.	26-A-4384	Truck general ang't drg.	20-B-2151
Load limit	119300 lbs.	Rev. ang't. drg. of bulkhead	26-A-5425	Wheel base of truck	5' 6"
Lightweight of car	57700 lbs.	Dwg. list of bulkhead application	none	Truck centers	43' 3"
		Bill of mat. for bulkhead application	1028	Wheel base of car	48' 9"
Length -- * between bulkheads	48' 6"	Underframe -- cast steel	26-A-4387	axle -- -- 5-1/2 X 10. drg.	20-D-3046
Lower end sills	53' 6"	Handbrake -- Equipto	26-B-4334	Wheels -- 33" dia. 1-wear wrot steel	
* over strikers	54' 3"	Draft gear -- Westinghouse NY-11-F		Brake beam -- No. 18 Positive	
over pull. face of splen	56' 9"	Complex yoke -- vertical	Y-40 H.T.	Spring travel	3-11/16"
		Complex -- Rotary "E" head		Truck springs -- Nos. 3010, 3072, 3073	
Width -- * over deck	10' 6"	Loading anchors	26-B-5061	Journal box lid -- T-2	20-F-2157
over bulkheads	10' 1"	Air brakes -- Westinghouse "AB" 10 X 12		Friction casting -- ASF A-3	20-B-1949
over side sill plates	9' 3"				
* extreme over hooking	10' 6"				
Height					
* top of deck to top of bulkhead	6' 0"	Brake adjuster -- Royal type "F"		Trucks -- Loulling A-3 45 degree smulber	
* rail to top of deck	3' 5-1/2"			side frame CS-2827HT drg.	20-A-2181
* rail to aft lower height	9' 11-1/2"			bolster CS-2816HT drg.	20-A-2781

* Information for the Official Railway Equipment Register