

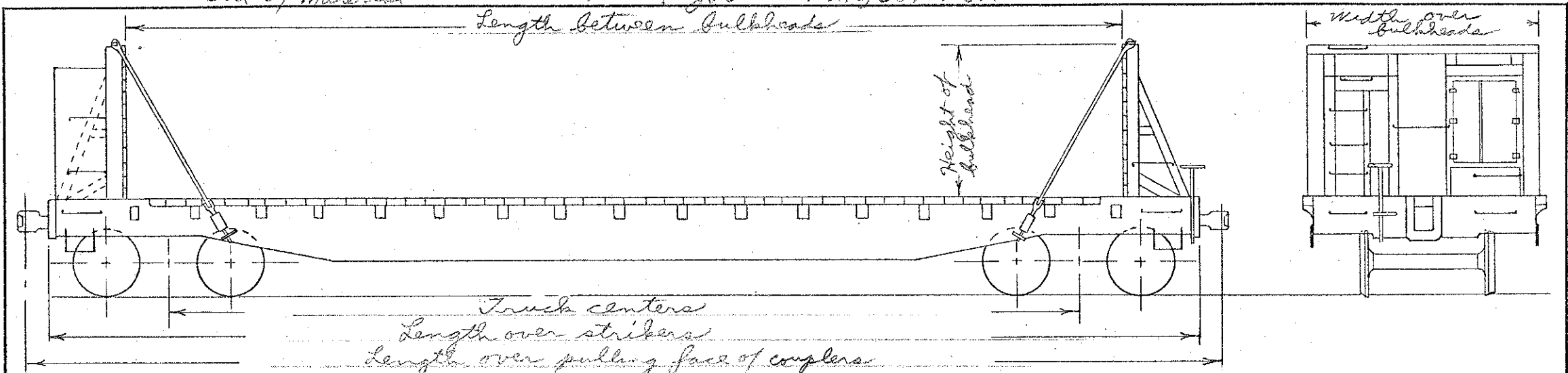
DATE OF REVISION	

FT-W Wallboard loading service  
 AAR Mech. designation FMS  
 Body drg list 3092  
 Truck Arg. list 3093  
 Bill of Material 780

Series 92000-92017 18 cars  
 92112 1 car  
 Built new (Lopcha Shops) 1952  
 Modified to wallboard service 1952, 61  
 Jobs nos. F-216, 367 & 619



Car diagram FOLIO 211/4  
 PAGE F-20-B



* Nominal Capacity	100,000 lbs	Gen. Arng't. drg.	26-A-4384	Truck general arng't. drg.	20-B-2151
Load limit	118,000 lbs	Gen. Arng't. drg. of bulkhead	26-A-5425	Wheel base of truck	5' 6"
Lightweight of car	59,000 lbs	Drng. list of bulkhead application	none	Truck centers	43' 3"
Length -- *between bulkheads	48' 6"	B. of M. for bulkhead application	1028	Wheel base of car	48' 9"
over end sills	53' 6"	Underframe -- Cast steel	26-A-4389	Axle --	15-1/2 X 10 drg. 20-D-3046
*over strikers	54' 3"	Handbrake -- Equipto	26-B-4334	Wheels -- 33" dia. 1-wear-wrot steel	
over pull. face of cplers.	56' 9"	Draft gear -- Westinghouse	NY-11-F	Brake beam --	No. 18 Positive
Width -- *over deck	10' 6"	Coupled yoke -- Vertical	Y-40 H.T.	Spring travel	3-11/16"
over bulkheads	10' 1"	Coupler -- Rotary "E" Head		Truck springs -- Nos. 3010, 3072, 3073	
over side sill plates	9' 3"	Lading anchors --	26-B-5061	Journal box slide -- T-2	20-F-2157
* extreme over decking	10' 6"	Air brakes -- Westinghouse "AB" 10 X 12		Friction casting -- ASF A-3	20-B-1949
Height --		Brake adjuster -- Royal Topper "F"		Trucks -- Scullin A-3 45 degree snubler	
* top of deck to top of bulkhead	6' 6"			sider frame CS-2827 HT drg.	20-A-2181
* rail to top of deck	3' 5-1/2"			bolster CS-2816 HT drg.	20-A-2781
* rail to extreme width	3' 5-1/2"				
* rail to extreme height	9' 11-1/2"				

\* Information for the Official Railway Equipment Register