

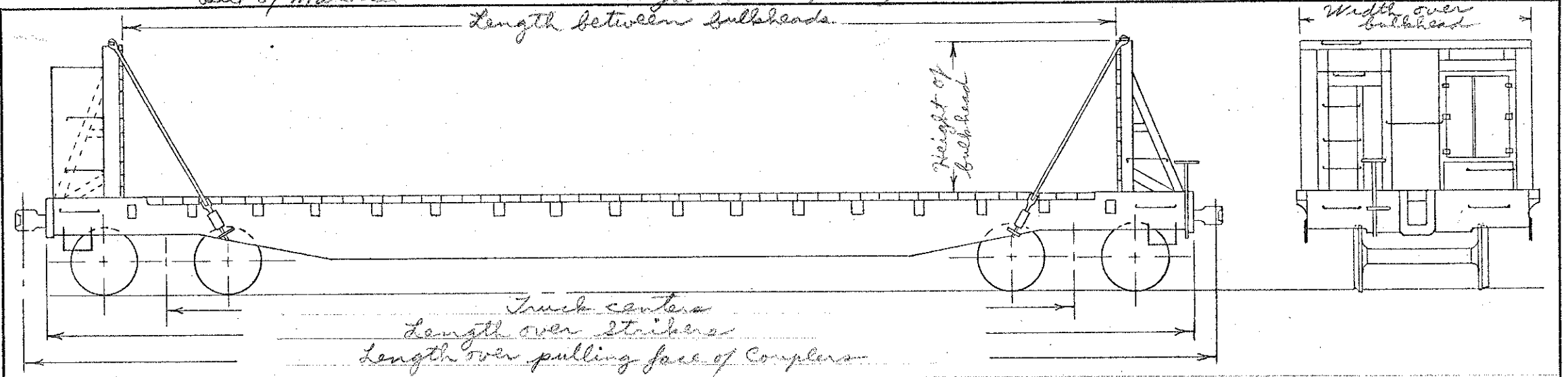
DATE OF REVISION	

FT-W Wallboard loading service  
 AAR Mech. designation FMS  
 Body drg list 3092  
 Trunk drg list 3093  
 Bill of Material 780

Series 92118-92195 78 Cars  
 Built new (Topeka shops) 1952  
 Modified to wallboard service -1955, 56457  
 Job Nos. 202, 256, 275 & 276



Car Diagram FOLIO 211/4  
 PAGE F-20-C



*Nominal Capacity	100,000 lbs.	Gen. Archt. drg.	26-A-4384	Truck general archt. drg.	20-B-2151
Load limit	119,000 lbs.	Gen. Archt. drg. of bulkhead	26-A-5425	Wheel base of truck	5' 6"
Light weight of car	58,000 lbs.	Drg. list of bulkhead application	none	Truck centers	43' 3"
		Bi. of M. for bulkhead application	1028	Wheel base of car	48' 9"
Length -- *between bulkheads	48' 6"	Underframe -- Cast steel	26-A-4389	axle -- 5-1/2 X 10	drg 20-D-3046
over end sills	53' 6"	Handbrake -- Equipco	26-B-4334	Wheels -- 33" dia. 1-wear wrot steel	
*over strikers	54' 3"	Draft gear -- Westinghouse	NY-11-F	Brake beam -- No. 18 Positive	
over pull. face of Couplers	56' 9"	Coupler yoke -- Vertical	Y-40 H. T.	Spring travel --	3-11/16"
Width -- *over deck	10' 6"	Coupler -- Rotary "E" Head		Trunk springs -- Nos. 3010, 3072, 3073	
over bulkheads	10' 1"	Lading anchors	26-B-5061	Journal box lid -- T-2	20-F-2157
over side sill plates	9' 3"	Air brake -- Westinghouse "AB" 10 X 12		Friction Casting -- ASF A-3	20-B-1949
*extrema over decking	10' 6"	Brake adjuster	Royal Type "F"	Trucks -- Scullin A-3 45 degree snubber	
Height -- *bulkhead	6' 8"			side frame	CS-2827 HT drg, 20-A-2181
*rail to top of deck	3' 5-1/2"			bolster	CS-2816 HT drg, 20-A-2781
*rail to extreme width	3' 5-1/2"				
*rail to extreme height	10' 1-1/2"				

\* Information for the Official Railway Equipment Register