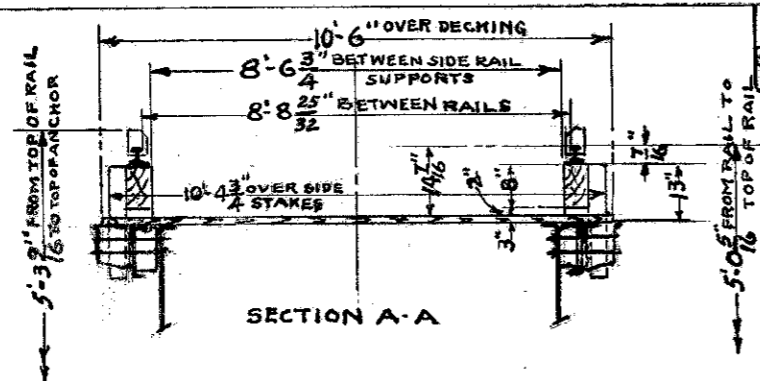


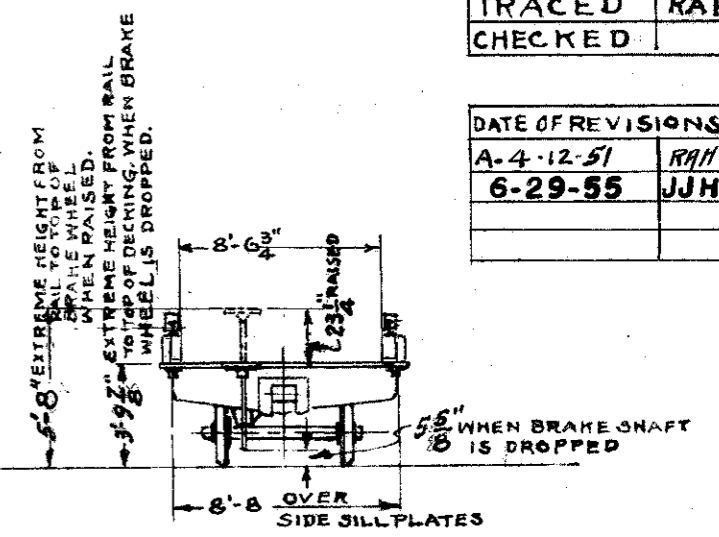
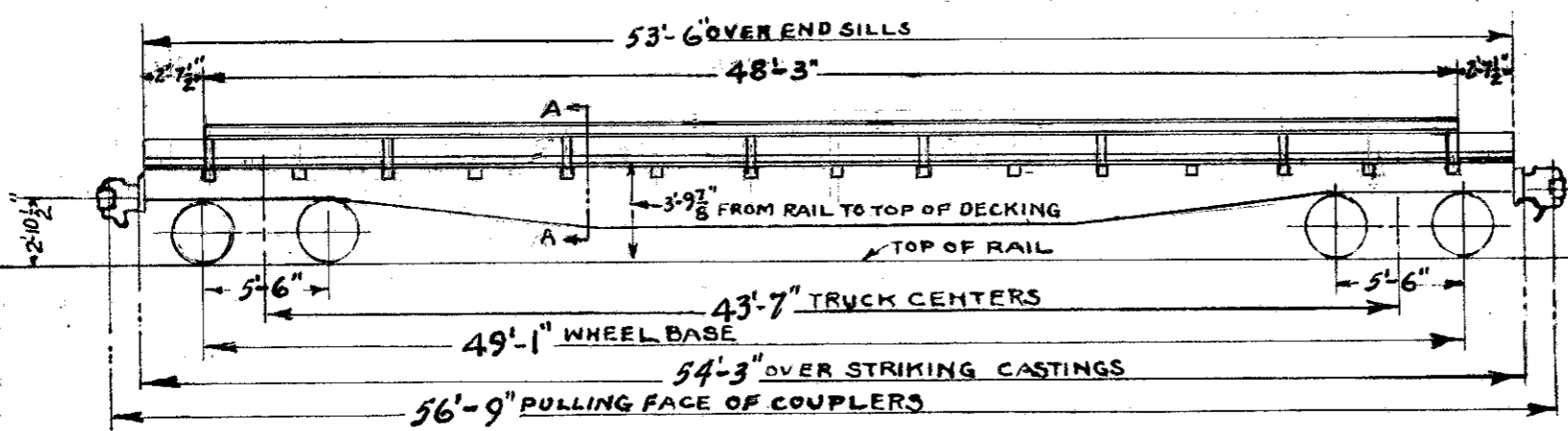
REMARKS	TYPE OF CAR	CLASS	SERIES	MODIFIED BY	YEAR
SEMI-TRAILER LOADING	FLAT	FT-L	92750-92761	A.T.S.F.RY	1951

FORMER FT-L 50'-0" BLT. 1924.



DRAWN	RAH
TRACED	RAH
CHECKED	

DATE OF REVISIONS	
A-4-12-51	RAH
6-29-55	JJH



DESCRIPTION

CAPACITY	100,000 LBS	WIDTH OVER FLOOR	10'-6"	DRAFT ATTACHMENT	HORIZ. KEY
LOAD LIMIT	109800 LBS	WIDTH OVER STAKE POCKETS	10'-6"	DRAFT GEAR	MINER A-18-S
LIGHT WEIGHT OF CAR	59200 LBS	EXTREME WIDTH OVER STAKE POCKET U-BOLTS	10'-7 1/2"	KIND OF TRUCK	CAST STEEL
WEIGHT OF BODY	43200 LBS	HEIGHT FROM RAIL TO EXTREME WIDTH TO 1/2 OF STAKE POCKET U-BOLT	3'-3 3/4"	WHEEL BASE OF TRUCK	5'-6"
WEIGHT OF TRUCKS	EST. 16000 LBS	EXTREME HEIGHT TO TOP OF ANCHOR TO TOP OF BRAKE WHEEL RAISED	5'-3 9/16" / 5'-8"	TRUCK FRAME	ASF ANDREWS SIDE
HEIGHT FROM RAIL TO TOP OF FLOOR	3'-9 7/8"	UNDERFRAME	STEEL	JOURNAL BOX LID	RY. STEEL SPRING CO.
LENGTH OVER END SILLS	53'-6"	KIND OF COUPLERS	"D" HEAD	SIZE OF JOURNAL	5 1/2" X 10"
LENGTH OVER STRIKING CASTINGS	54'-3"	SIZE OF SHANK	6" X 8"	WHEELS	33"-750 LBS. C.I.
LENGTH OVER PULLING FACE OF COUPLERS	56'-9"	DRAW BAR YOKE	CAST STEEL	BRAKE BEAM	CRECO 2+
CENTER TO CENTER OF TRUCKS	43'-7"	DRAWBAR ATTACHMENT	HORIZ. KEY	BRAKES	AB EQUIPMENT
WHEEL BASE OF CAR	49'-1"	UNCOUPLING ARRANGEMENT	IMPERIAL		
WIDTH OVER SIDE SILL PLATES	8'-8"	HAND BRAKE	URECO, DROP TYPE		

Obsolete
no more live cars
6-15-73

