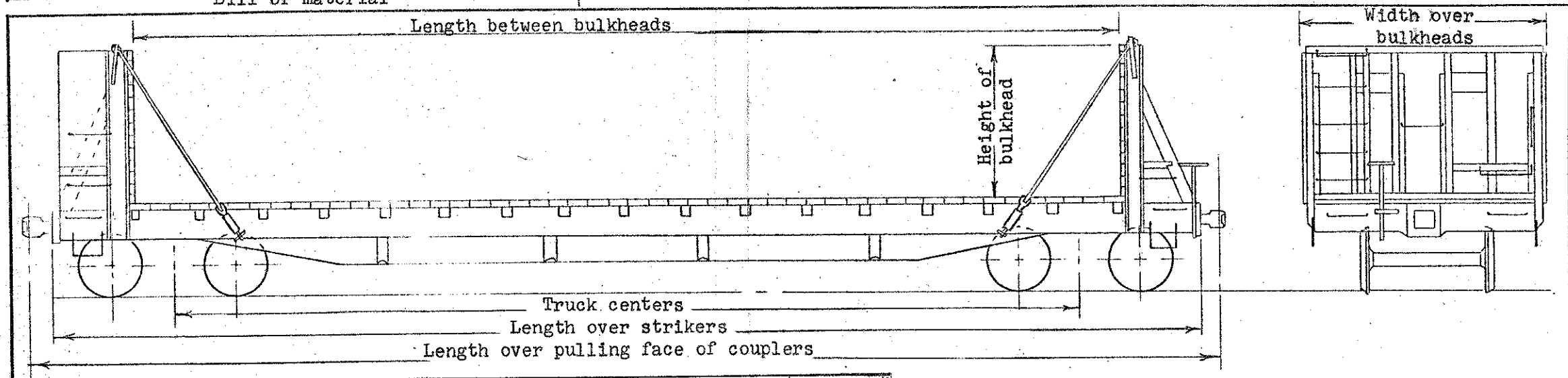


DATE OF REVISION	FT-L Wallboard loading service	Series (see tabulation below)
6-29-55	AAR Mech. designation FMS	Built new 1924 rebuilt 1946
12-18-63	Body drawing list 1214	Modified to wallboard service 1952-1959
	Truck drawing list 1212	
	Bill of material	



Car Diagram FOLIO 211/4

PAGE F-7



Series	Bulkhead		No. of Cars	Series	Bulkhead		No. of Cars
	Between	Height			Between	Height	
91239-91244	48'6"	6'8"	6	92091	44'6"	6'6"	1
91245-91247	46'1"	5'6"	3	92092	48'6"	6'6"	1
91248-91249	44'8"	6'0"	2	92093-92098	44'4"	6'6"	6
91253-91257	48'4"	6'6"	5	92099-92100	48'6"	6'6"	2
91258-91269	48'6"	6'8"	12	92101	44'4"	6'6"	1
91270-91299	48'6"	6'6"	30	92235-92244	48'4"	6'6"	10
91300	48'4"	6'6"	1	92481-92489	48'6"	6'6"	9
91303-91304	44'4"	6'6"	2	93095-93099	48'6"	6'8"	5
91308-91309	48'6"	6'8"	2	97500-97540	48'6"	6'8"	41
91311	48'6"	6'8"	1				
91312	46'1"	6'6"	1				
91314	46'1"	6'6"	1				
92018	44'6"	6'6"	1				
92019	48'6"	6'6"	1				
92020-92024	44'4"	6'6"	5				
92025	48'6"	6'6"	1				
92026	44'4"	6'6"	1				
92027	38'10"	6'8"	1				
92028-92030	46'1"	6'6"	3				
92031-92034	48'6"	6'6"	4				
92087-92089	44'4"	6'0"	3				
92090	48'6"	6'6"	1				

Height--*top of deck to top of bulkhead (see tabulation)	
*rail to top of deck	3'9-7/8"
*rail to extreme width	3'3-3/4"
*extreme to top of bulkhead (see tabulation)	
Gen. Arrg't. drawing of bulkhead	26-A-6329
Drawing list of bulkhead	None
B of M for bulkhead application	1022
Truck arrg't. drawing	20-A-971
Wheel base of truck	5'6"
Truck centers	4'3'7"
Wheel base of car	4'9'1"
Axle - - -	5-1/2 X 10
Spring travel	1-7/16"
Truck springs	#662
Wheels - - -	33" diameter 1-W wrot steel
Brake beams - - -	Creco No. 2 plus
Trucks - - -	ASF
side frame	CS-423, Drawing 20-C-940
bolster	CS-464, Drawing 20-D-970
(Note) Some of these cars are being equipped with A-3 ride control trucks which were removed from Bx-38.	

*Information for the Official Railway Equipment Register