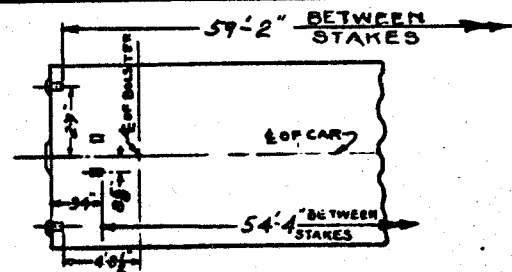


TYPE OF CAR	CLASS	SERIES	BUILT BY	YEAR
FLAT	FT-7	90900-90999	A.T.S.F.(TS)	1956

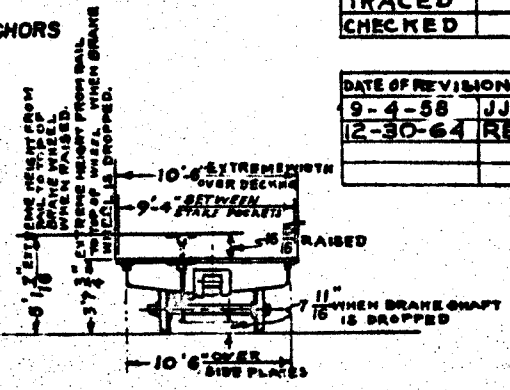
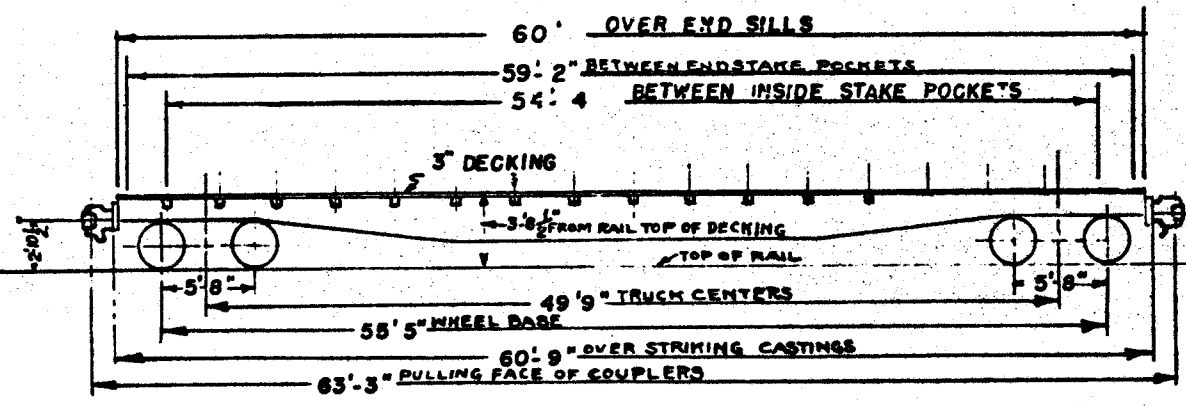
36 CARS MODIFIED FOR FORD AUTO FRAME LOADING SERVICE PER INSTRUCTION LETTER 3-24-64, JOB NO. F-870. SEE PAGE F-29-A-1.  
ORIGINAL NUMBER OF CARS BUILT - 100



PLAN VIEW SHOWING END STAKE POCKETS

CAR EQUIPED WITH KEYSTONE NO.808 ANCHORS REF. 26-F-4837

DRAWN	JJH
TRACED	
CHECKED	
DATE OF REVISIONS	
9-4-58	JJH
12-30-64	RES



DESCRIPTION

CAPACITY	140,000	WIDTH OVER FLOOR	10'-6"	DRAFT ATTACHMENT	HORIZONTAL KEY
LOAD LIMIT	144,200	WIDTH BETWEEN STAKE POCKETS	9'-4"	DRAFT GEAR	WESTINGHOUSE NY-11-F
LIGHT WEIGHT OF CAR	65,800	EXTREME WIDTH OVER DECKING	10'-6"	KIND OF TRUCK	A.S.F. A-3 3-11/16 SPR. TRAVEL
WEIGHT OF BODY		HEIGHT FROM RAIL TO TOP OF DECKING	3'-8 1/2"	WHEEL BASE OF TRUCK	5'-8"
WEIGHT OF TRUCK		EXTREME HEIGHT TO TOP OF FLOOR	3'-8 1/2"	TRUCK FRAME	GRADE 'B' CS 2869 20-B-2518
HEIGHT FROM RAIL TO TOP OF FLOOR	3'-8 1/2"	EXTREME HEIGHT TO TOP OF BRAKE WHEEL	5'-1 7/16"	JOURNAL BOX LID	ARTICULATED U.S.M. CO.
LENGTH OVER END SILLS	60'	UNDERFRAME	CAST STEEL	SIZE OF JOURNAL	A.A.R 6'x11"
LENGTH OVER STRIKING CASTINGS	60'-9"	KIND OF COUPLERS	AAR 6-1/4 X8 "E" HEAD ROTARY BOTTOM OPERATING WITH ARTICULATED LOCK LIFTER	WHEELS	33" ONE-WEAR WROT STEEL
LENGTH OVER PULLING FACE OF COUPLERS	63'-3"	DRAW BAR YOKE	VERTICAL Y-40 HT.	BRAKE BEAM	NO.18 UNIT TYPE
CENTER TO CENTER OF TRUCKS	49'-9"	DRAWBAR ATTACHMENT	SINGLE, HORIZ. KEY	BRAKES	WESTINGHOUSE AB 10 X 12
WHEEL BASE OF CAR	55'-5"	UNCOUPLING ARRANGEMENT	S.R.E.M CO. STANDARD	BOLSTER	A.S.F. GRADE 'B' CS. 2870 20-B-2517
WIDTH OVER SIDE SILL PLATES	10'-6"	HAND BRAKE	EQUIPCO, DROP SHAFT	SPRINGS	3010-3011-3072-3073
DRG. LIST. - BODY	213 / 3262				
DRG. LIST. - TRUCK	213 / 3263				
BILL OF MATERIAL	926				

