

FIRST ISSUE DATE **8-24-54**

DATE OF REVISION

**2-27-64**

Ft-4 (Heavy duty flat car)  
 AAR Mechanical Designation - FM  
 Drawing List 3204  
 Bill of Material 855

Series 90020 1 Car  
 Built new 1954 by ATSF Topeka Shops

DIAGRAM FOLIO **211/4**

PAGE **F-26**

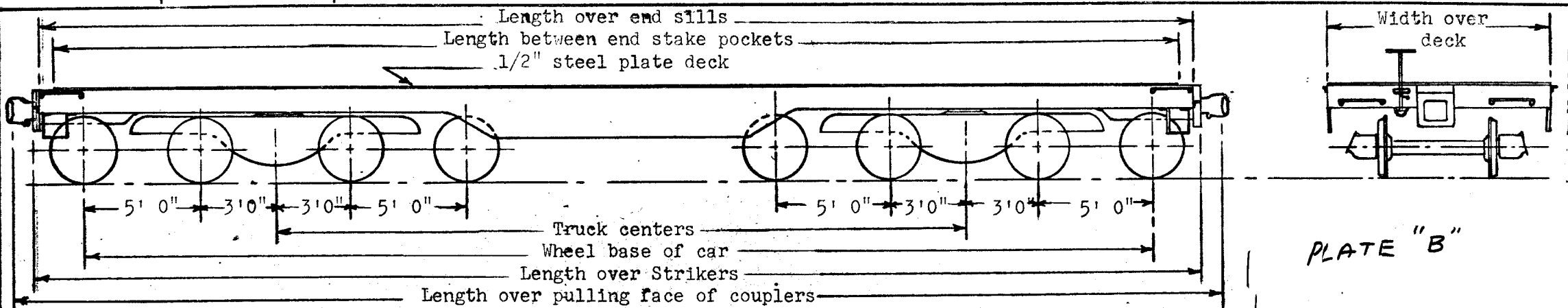


PLATE "B"

This underframe designed for these loading conditions:

Length of Lading	Load	Length of Lading	Load
0	390,000	6' 0"	444,400
2' 0"	406,600	8' 0"	466,000
4' 0"	424,600	10' 0"	Load limit

*Nominal capacity	500,000 lbs.	Gen. Arrgt. Drg.	26-A-5022	Truck Arrgt. Drg.	20-A-2443
Load limit	525,600 lbs.	Underframe - Cast steel	26-A-4914	Truck centers	24' 6"
Lightweight of car	102,400 lbs.	Lading anchors	Slots in deck	Wheel base of car	40' 6"
Length - *Over end sills	44' 4"	Deck - 1/2" Steel plate	26-A-4915	Axles - 7 x 13	Shop Card 23056
Between end stake pockets	43' 3"	Draft gear	AAR Approved	Wheels 33" dia. MW WS	AAR-G-33
*Over strikers	45' 4"	Coupler - Swivel shank, Type "E"	16-B-2066	Brake beams - Creco #4	20-D-2424
Over pull. face of cplrs	47' 10"	Yoke - AAR Y-30	16-B-2067	Load springs - 1- 5/8" travel	#700, 701
		Handbrake - Equipco	26-B-5029	Snubber spring	#708
Width - *Over deck	10' 0"	Air brakes	West. "AB" 10 x 12	Roller bearings - Timken	C-26373
*Over end sills	9' 0"			per Car Folio Page 556-A-9	
*Ext. @ jacking pad	10' 5"	Center of gravity	Approx. <del>40 1/2"</del> 31"	Trucks - Buckeye, Dalman 2-level	
Over side sill steps	8' 11"	Min. turning radius	39-deg. curve, 150 ft. radius	Side frame	CS-2885 Drg. 20-A-2442
Height - *Rail to top of floor	4' 0- 1/2"			Bolster	CS-2884 Drg. 20-A-2441
*Rail to ext. width	3' 1"			Span Bolster	CS-2883 Drg. 20-A-2440
*Extreme, handbrake raised	5' 9"			Total weight of trucks	61,400 lbs.