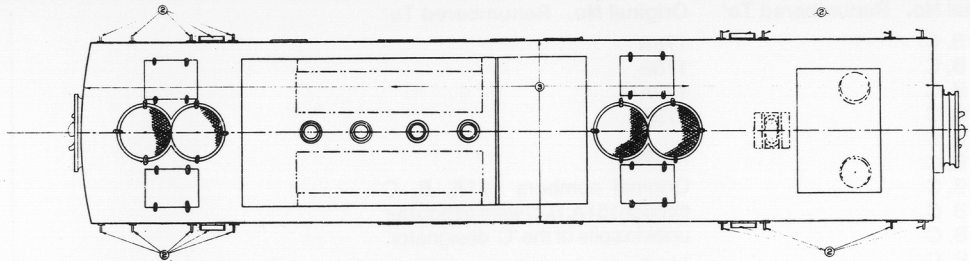


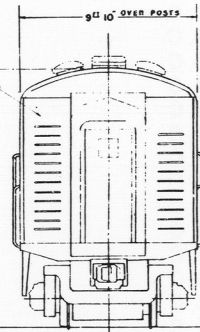
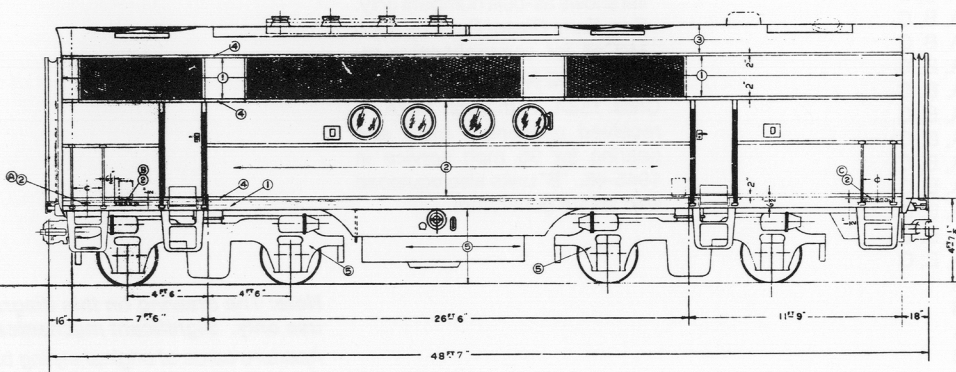
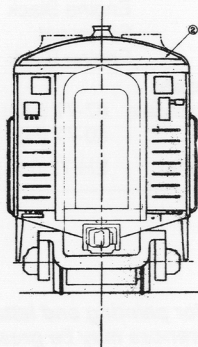
# SANTA FE DIESEL LOCOMOTIVE STYLING DIAGRAM

# FT-B FREIGHT

8077448



STYLING & PAINTING DATA			
COLORS AND QUANTITIES REQUIRED PER LOCOMOTIVE UNIT			
①	DUPONT DUCO	246-32654	YELLOW
②	DUPONT DUCO	246-53623	DARK BLUE
③	DUPONT DUCO	246-2504	BLACK
④	DUPONT DUCO	246-9089R	SWIFT RED
⑤	DUPONT DULUX	88-005	BLACK
⑥			
PAINTING DETAILS			
⑦	8077444	2 1/2" LETTER "E"	
⑧	8077443	2 1/2" NUMERALS	
⑨	8077445	SANTA FE INITIALS	
⑩			
⑪			
REMARKS, R.R. LOCO. NO. 100A - 100B - 100C - 114C 1964.			



1350 HP FREIGHT LOCO -B"SECTION

ELECTRO-MOTIVE DIVISION GENERAL MOTORS CORPORATION 150 GREENWICH, BELLVILLE, U. S. A.			
<b>STYLING &amp; PAINTING</b>			
FIRST USED ON E 561	DR. S. DECK	1-22-43	APPROVED
CH	INSP.	1/27	S. L. V. J.
DATE OF PRINT			REVISION
			<b>8077448</b>

# SANTA FE DIESEL LOCOMOTIVE STYLING DIAGRAM

# FT-B (BOOSTER) UNITS

Set 100 built 12/40. Remainder built 1/41 - 8/45

Original No.	Renumbered To†	Original No.	Renumbered To†	Original No.	Renumbered To†
100A		128A, B, C		178A	
101A	100B	129A, B, C		178B	
101A	See footnote	130A, B, C		179A	
101C	for renumberings	131A, B, C		179B	
100C	of booster units	132A, B, C			
102A, B, C	101A - 151C.	133A, B, C			
103A, B, C		134A, B, C			
104A, B, C		135A, B, C			
105A, B, C		136A, B, C			
106A, B, C		137A, B, C			
107A, B, C		138A, B, C			
108A, B, C		139A, B, C			
109A, B, C		140A, B, C			
110A, B, C		141A, B, C			
111A, B, C		142A, B, C			
112A, B, C		143A, B, C			
113A, B, C		144A, B, C			
114A, B, C		145A, B, C			
115A, B, C		146A, B, C			
116A, B, C		147A, B, C			
117A, B, C		148A, B, C			
118A, B, C		148A, B, C			
119A, B, C		150A, B, C			
120A, B, C		151A, B, C			
121A, B, C		167A			
122A, B, C		167B			
123A, B, C		177A			
124A, B, C		177B			
125A, B, C		176B			
126A, B, C					
127A, B, C					

## Notes:

Original numbers 101A, B, C through 151A, B, C were all booster units in spite of the 'C' designator.

†Units 101C-151C were renumbered into numbers above 152 around the end of WW II. This list shows as-built numbers only. See *Early Diesel Daze* by John McCall for comprehensive renumbering specifics.

Units 158A, B through 167A, B received passenger paint and gearing for 95 mph service in 1945-46. "B" units also equipped with steam generators.

## Model Paints (see text):

Blue:	Floquil
	3 pts. Dark Blue
	1pt. Engine Black
	Scalecoat
	Santa Fe Blue
Yellow:	Floquil
	3 pts. E.L. Yellow
	1 pt. Reefer White
	Scalecoat
	Same colors
Black:	Floquil
	Engine Black
	Scalecoat
	Engine Black

## Decals:

Microscale	87-77 (HO)
	60-77 (N)
Champ	EH-72 (HO)

**Note: The drawing on this diagram is for painting and lettering use only. Significant mechanical differences may be present!**

Aperture cards of original styling blueprints were donated to the Santa Fe Modelers Organization by Electro-Motive Division, General Motors Corporation.

Published by the SFMO, October 1991