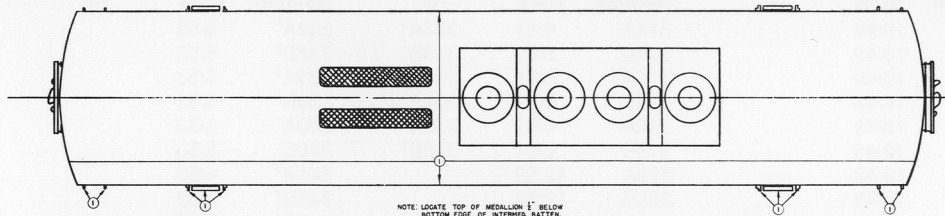


SANTA FE DIESEL LOCOMOTIVE STYLING DIAGRAM

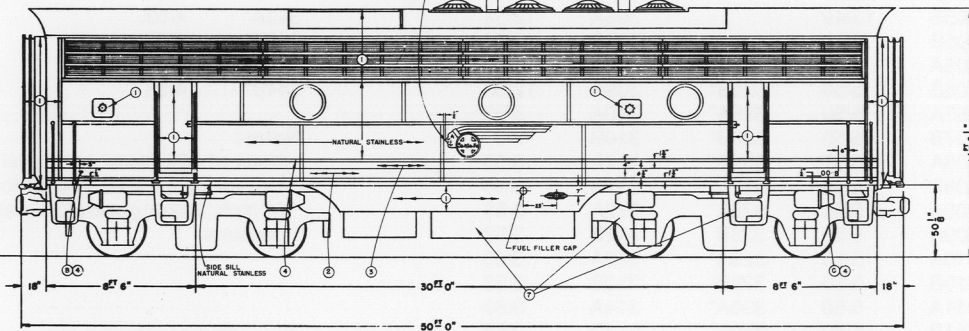
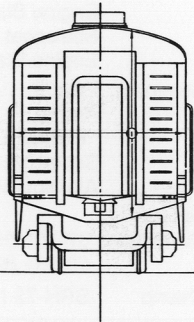
F7-B PASSENGER

312318



NOTE: LOCATE TOP OF MEDALLION 1" BELOW BOTTOM EDGE OF INTERMED BATTEN.

②③④



PORTHOLES - ANODIZED ALUMINUM - SATIN FINISH
DOORS - IMIT. STAINLESS 254-4202
DOOR BASH - IMIT. STAINLESS 254-4202
GRABIRONS - IMIT. STAINLESS 254-4202
THE PORTIONS OF STAINLESS STEEL SIDE PANELS TO BE PAINTED ARE TO BE PRIMED WITH "STANTITE" PRIMER PROCESS SPEC. NO. 3023.

④ WHEN NATURAL STAINLESS STEEL IS UNAVAILABLE BATTENS - FINISH ANGLES - PANELS - ETC. INDICATED AS NATURAL STAINLESS SHOULD BE PAINTED IMITATION STAINLESS DUCO 264-4202

STYLING & PAINTING DATA

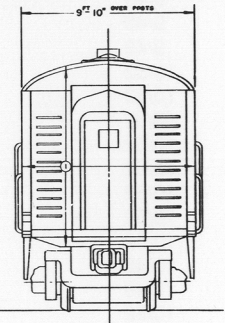
COLORS AND QUANTITIES REQUIRED PER LOCOMOTIVE UNIT

① 254-4102 - DUCO - IMIT. STAINLESS	800254
② 254-1853M - DUCO - RED (254-3049R)	800254
③ 254-373 - DUCO - YELLOW (254-3142S)	800254
④ 254-2234 - DUCO - BLACK	800253
⑤ 254-6957 - DUCO - MAROON	800253
⑥ 254-3148I - DUCO - TAN	811434I
⑦ 188-220 - SOLIDS - ALUMINUM	811351

PAINTING DETAILS

① 8025484 - MEDALLION	○
② 8077440 - 3" LETTER "7"	○
③ 8077443 - 6" NUMERALS 8 LETTERS	○
④ 8077447 - 4" NUMERALS 8 LETTERS	○

REMARKS:



MATERIAL		DATE OF PART	
J. J. MOREAU 10-20-57		10-20-57	
ELECTRO-MOTIVE DIVISION GENERAL MOTORS CORPORATION LA GRAMME, ILLINOIS, U.S.A.		STYLING & PAINTING	
M 2542 F BRIGALLON RELOCATED		DATE OF PART	
NEXT TO M. NOTE RADIO		10-15-57	
HYBIA C REGRAND		DATE OF PART	
BY: [Signature]		DATE OF PART	
S.V.A. 101		312318	

SANTA FE DIESEL LOCOMOTIVE STYLING DIAGRAM

F7-B (BOOSTER) UNITS

Original Number	Date Built	Renumbered To:	Original Number	Date Built	Renumbered To:	Original Number	Date Built	Renumbered To:	Original Number	Date Built	Renumbered To:
37A	9/49		300A	10/49		314A	6/51	333A*	338A*	5/53	
37B	9/49		300B	10/49		314B	6/51	333B*	338B*	5/53	
38A	9/49		301A	10/49		315A	6/51	334A*	339A*	5/53	
38B	9/49		301B	10/49		315B	6/51	334B*	339B*	5/53	
39A	9/49		302A	10/49		316A	6/51	335A*	340A*	5/53	
39B	9/49		302B	10/49		316B	6/51	335B*	340B*	5/53	
40A	9/49		303A	10/49		306A	12/52		341A*	4/53	
40B	9/49		303B	10/49		306B	12/52		341B*	4/53	
41A	9/49		304A	10/49		307A	12/52		342A*	4/53	
41B	9/49		304B	10/49		307B	12/52		342B*	4/53	
42A	10/52		305B	10/49		308A	12/52		343A*	4/53	
42B	10/52		305B	10/49		308B	12/52		343B*	4/53	
43A	10/52		306A	5/50	325A*	309A	12/52		344A*	4/53	
43B	10/52		306B	5/50	325B*	309B	12/52		344B*	4/53	
44A	10/52		307A	5/50	326A*	310A	3/53				
44B	10/52		307B	5/50	326B*	310B	3/53				
45A	10/52		308A	5/50	327A*	311A	3/53				
45B	10/52		308B	5/50	327B	311B	3/53				
46A	10/48		309A	5/50	328A*	312A	3/53				
46B	10/48		309B	5/50	328B	312B	3/53				
47A	10/52		310A	5/50	329A*	313A	3/53				
47B	10/52		310B	5/50	329B	313B	3/53				
			311A	5/50	330A*	314A	3/53				
			311B	5/50	330B*	314B	3/53				
			312A	5/50	331A*	336A*	4/53				
			312B	5/50	331B*	336B*	4/53				
			313A	6/51	332A*	337A*	4/53				
			313B	6/51	332B*	337B*	4/53				

Notes:

* Units of 325 class were dual-service locomotives geared for 80 mph. Steam generators in all boosters.

Model Paints (see text):

Red: Scalecoat
Santa Fe Red
Floquil
Caboose Red

Yellow: Floquil
Reefer Yellow
Scalecoat
Reefer Yellow

Black: Floquil
Engine Black
Scalecoat
Engine Black

Aluminum: Floquil
Amtrak
Platinum Mist
Scalecoat
Aluminum

Decals:

Microscale 87-101 (HO)
60-101 (N)
Champ BRH-73 (HO)

Note: The drawing on this diagram is for painting and lettering use only. Significant mechanical differences are present (drawing is actually an F-3 as all Santa Fe F-7's had D/B fans)!

Aperture cards of original styling blueprints were donated to the Santa Fe Modelers Organization by Electro-Motive Division, General Motors Corporation.

Published by the SFMO, October 1991