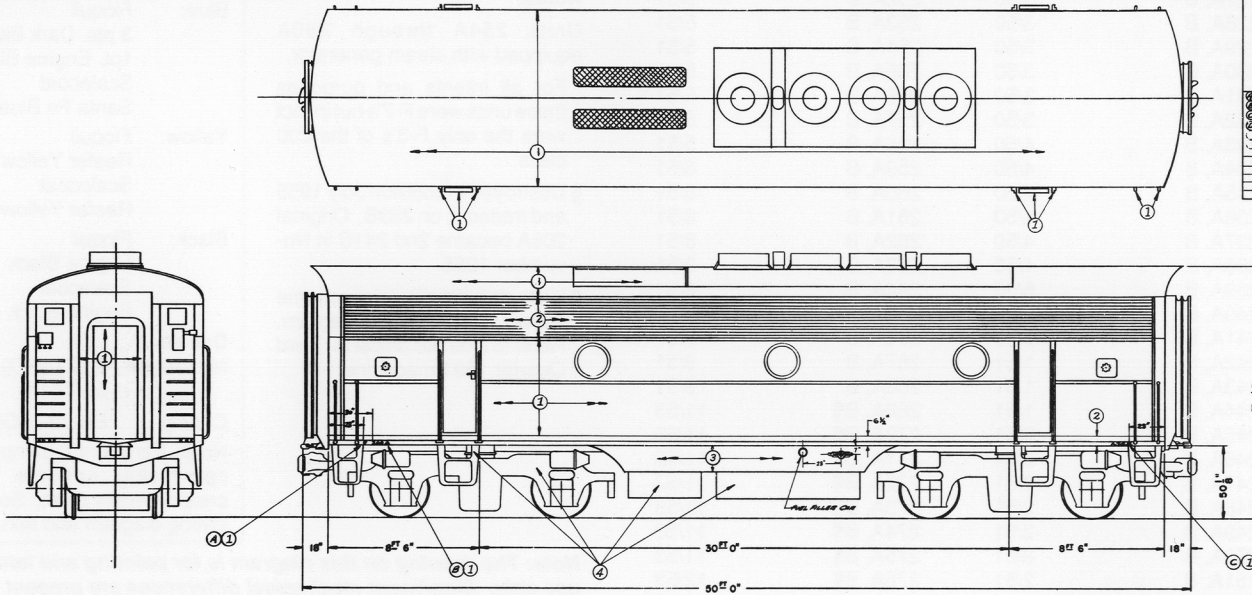


SANTA FE DIESEL LOCOMOTIVE STYLING DIAGRAM

F7-B FREIGHT

8/38/62



STYLING & PAINTING DATA

COLORS AND QUANTITIES REQUIRED PER LOCOMOTIVE UNIT

1	BLUE - 754 - 53633 - DUPONT DUCO	IND. 8106.898
2	YELLOW - 152 - 373 - DUPONT DUCO	872 8106.898
3	BLACK - 154 - 334 - DUPONT DUCO	872 8106.898
4	ORANGE - 88 - 763 - DUPONT DUCO	872 8106.898
5		
6		
7		
8		
9		
10		
11		
12		
13		
14		
15		
16		
17		
18		
19		
20		
21		
22		
23		
24		
25		
26		
27		
28		
29		
30		
31		
32		
33		
34		
35		
36		
37		
38		
39		
40		
41		
42		
43		
44		
45		
46		
47		
48		
49		
50		
51		
52		
53		
54		
55		
56		
57		
58		
59		
60		
61		
62		
63		
64		
65		
66		
67		
68		
69		
70		
71		
72		
73		
74		
75		
76		
77		
78		
79		
80		
81		
82		
83		
84		
85		
86		
87		
88		
89		
90		
91		
92		
93		
94		
95		
96		
97		
98		
99		
100		

PAINTING DETAILS

1	0017440 - 3" LETTER "F"	
2	0017443 - 2" NUMBERS 1	
3	0017445 - SANTA FE INITIALS	
4	0017447 - INSIDE MARKINGS	
5		
6		
7		
8		
9		
10		
11		
12		
13		
14		
15		
16		
17		
18		
19		
20		
21		
22		
23		
24		
25		
26		
27		
28		
29		
30		
31		
32		
33		
34		
35		
36		
37		
38		
39		
40		
41		
42		
43		
44		
45		
46		
47		
48		
49		
50		
51		
52		
53		
54		
55		
56		
57		
58		
59		
60		
61		
62		
63		
64		
65		
66		
67		
68		
69		
70		
71		
72		
73		
74		
75		
76		
77		
78		
79		
80		
81		
82		
83		
84		
85		
86		
87		
88		
89		
90		
91		
92		
93		
94		
95		
96		
97		
98		
99		
100		

REMARKS:

DATE	8/38/62
BY	W. J. ...
CHECKED BY	...
APPROVED BY	...
DATE OF PRINT	8/38/62
STYLING & PAINTING	
8/38/62	

SANTA FE DIESEL LOCOMOTIVE STYLING DIAGRAM

F7-B (BOOSTER) UNITS

Original No.	Date Built	Original No.	Date Built	Original No.	Date Built
200A, B*	10/48	227A, B	3/50	252A, B	5/51
201A, B*	11/48	228A, B	3/50	253A, B	5/51
202A, B	6/49	229A, B	3/50	254A, B	5/51
203A, B	7/49	230A, B	3/50	255A, B	5/51
204A, B	7/49	231A, B	3/50	256A, B	5/51
205A, B	7/49	232A, B	3/50	257A, B	5/51
206A, B	7/49	233A, B	4/50	258A, B	5/51
207A, B	7/49	234A, B	4/50	259A, B	8/51
208A, B	9/49	235A, B	4/50	260A, B	8/51
209A, B	9/49	236A, B	4/50	261A, B	8/51
210A, B	9/49	237A, B	4/50	262A, B	8/51
211A, B	9/49	238A, B	4/50	263A, B	8/51
212A, B	11/49	239A, B	5/50	264A, B	8/51
213A, B	11/49	240A, B	5/50	265A, B	9/51
214A, B	11/49	241A, B§	5/50	266A, B	9/51
215A, B	11/49	242A, B	1/51	267A, B	9/51
216A, B	11/49	243A, B	1/51	268A, B	9/51
217A, B	11/49	244A, B	1/51	269A, B¶	11/53
218A, B	12/49	245A, B	2/51	270A, B¶	11/53
219A, B	12/49	246A, B	2/51	271A, B¶	11/53
220A, B	12/49	247A, B	2/51	272A, B¶	11/53
221A, B	12/49	248A, B	2/51	273A, B¶	11/53
222A, B	12/49	249A, B	2/51	274A, B¶	11/53
223A, B	12/49	250A, B	2/51	275A, B¶	11/53
224A, B	12/49	251A, B	2/51	276A, B¶	12/53
225A, B	12/49			277A, B¶	12/53
226A, B	12/49			278A, B¶	12/53
				279A, B¶	12/53
				280A, B¶	12/53

Notes:

Units 254A through 280A equipped with steam generator.

* For all intents and purposes these units were F-7's but in fact were the only F-3's of the 200 class.

§ Destroyed in collision July 1955 and traded in on 289B. Original 205A became 2nd 241B in November 1955.

¶ Units *delivered* in paint scheme shown on this styling diagram. Refer to side bar article in Third Quarter 1991 magazine.

Model Paints (see text):

Blue: Floquil
3 pts. Dark Blue
1pt. Engine Black
Scalecoat
Santa Fe Blue

Yellow: Floquil
Reefer Yellow
Scalecoat
Reefer Yellow

Black: Floquil
Engine Black
Scalecoat
Engine Black

Decals:

Microscale 87-77 (HO)
60-77 (N)

Champ EH-72 (HO)

Note: Early units painted in catwhisker scheme with creamy yellow paint. See FT styling diagram and text.

Note: The drawing on this diagram is for painting and lettering use only. Significant mechanical differences are present (drawing is actually an early F-3 as all Santa Fe F-7's had D/B fans and low profile cooling fans)!

Aperture cards of original styling blueprints were donated to the Santa Fe Modelers Organization by Electro-Motive Division, General Motors Corporation.

Published by the SFMO, October 1991