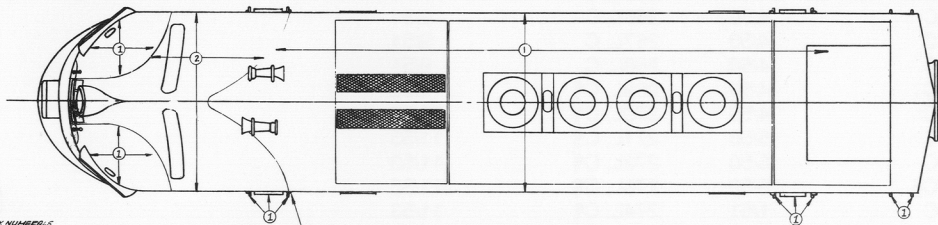


SANTA FE DIESEL LOCOMOTIVE STYLING DIAGRAM

F7-A FREIGHT

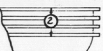
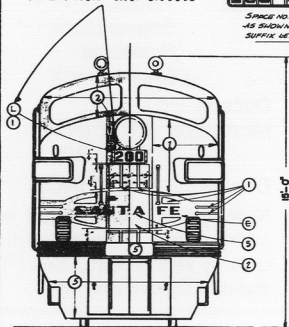
8138161



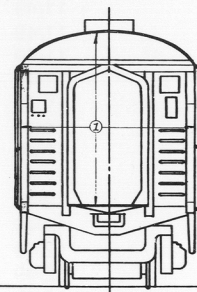
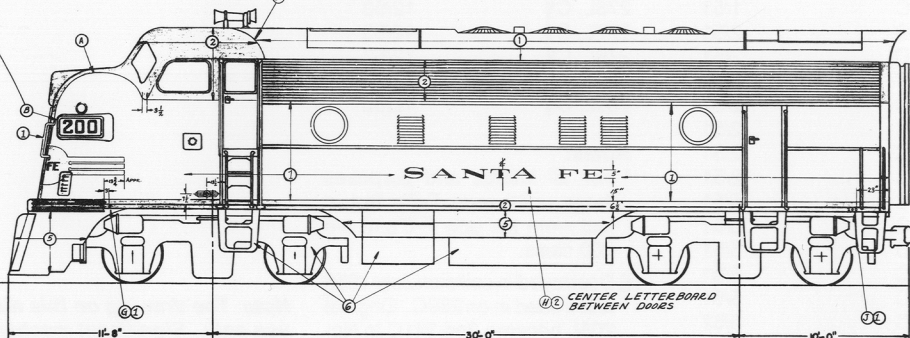
WHEN MTG. REFL. NO. PLATES
ABOVE DOOR SET
ALTERATION DRG. 8130892

200 C

SPACE NO. BOX NUMBER/LE
AS SHOWN WHEN USING
SUPPLY LETTERS



ENLARGED VIEW
OF ANTLIMBBER



STYLING & PAINTING DATA	
COLORS & QUANTITIES REQUIRED PER LOCOMOTIVE	
① BLUE - 354-53623 - DUPONT DICO	END. NO. 8102899
② YELLOW - 256-378 - DUPONT DICO	END. NO. 8102899
③ REDUCER (GAL)	
④ BLACK - 256-2342 - DUPONT DICO	END. NO. 8102899
⑤ BLACK - 88-758 - DUPONT DULUX	END. NO. 1062899
⑥	
⑦	
PAINTING DETAILS	
① 8102899 - STEERING WHEEL	⑧ 0071443 - 2 NUMERALS
② 8102899 - 11 NO. 801 NUMERALS	⑨ 0071443 - 2 NUMERALS
③ 8102899 - 8102899 - 8102899	⑩ 8102899 - 8102899
④ 8102899 - 8102899	⑪ 8102899 - 8102899
⑤ 8102899 - 8102899	⑫ 8102899 - 8102899
⑥ 8102899 - 8102899	⑬ 8102899 - 8102899
⑦ 8102899 - 8102899	⑭ 8102899 - 8102899
REMARKS BACKGROUND OF REFLECTIVE NO. PLATES - BLUE - 254-53623	
P-28 TRANSLUCENT IN BLUE SLIGHTS SEE COMMENTS DIV. 8102899	

MATERIAL		DATE OF FILE		PAGE NO.	
8138161	C	8/13/61	1	1	1
ELECTRO-MOTIVE DIVISION GENERAL SUPPLY CORPORATION 14 GRAVIER TALLMAN, S.E.A.					
STYLING & PAINTING					
DATE OF PRINT 8/13/61					

SANTA FE DIESEL LOCOMOTIVE STYLING DIAGRAM

F7-A (CAB) UNITS

Original No.	Date Built	Original No.	Date Built	Original No.	Date Built
200L, C*	10/48	232L, C	3/50	264L, C	8/51
201L, C*	11/48	233L, C	4/50	265L, C	9/51
202L, C	6/49	234L, C	4/50	266L, C	9/51
203L, C	7/49	235L, C	4/50	267L, C	9/51
204L, C	7/49	236L, C	4/50	268L, C	9/51
205L, C	7/49	237L, C	4/50	269L, C¶	11/53
206L, C	7/49	238L, C	4/50	270L, C¶	11/53
207L, C	7/49	239L, C	5/50	271L, C¶	11/53
208L, C	9/49	240L, C	5/50	272L, C¶	11/53
209L, C	9/49	241L, C§	5/50	273L, C¶	11/53
210L, C	9/49	242L, C	1/51	274L, C¶	11/53
211L, C	9/49	243L, C	1/51	275L, C¶	11/53
212L, C	11/49	244L, C	1/51	276L, C¶	12/53
213L, C	11/49	245L, C	2/51	277L, C¶	12/53
214L, C	11/49	246L, C	2/51	278L, C¶	12/53
215L, C	11/49	247L, C	2/51	279L, C¶	12/53
216L, C	11/49	248L, C	2/51	280L, C¶	12/53
217L, C	11/49	249L, C	2/51		
218L, C	12/49	250L, C	2/51		
219L, C	12/49	251L, C	2/51		
220L, C	12/49	252L, C	5/51		
221L, C	12/49	253L, C	5/51		
222L, C	12/49	254L, C	5/51		
223L, C	12/49	255L, C	5/51		
224L, C	12/49	256L, C	5/51		
225L, C	12/49	257L, C	5/51		
226L, C	12/49	258L, C	5/51		
227L, C	3/50	259L, C	8/51		
228L, C	3/50	260L, C	8/51		
229L, C	3/50	261L, C	8/51		
230L, C	3/50	262L, C	8/51		
231L, C	3/50	263L, C	8/51		

Notes:

* For all intents and purposes these units were F-7's But in fact were the only F-3's of the 200 class.

§ Destroyed in collision July 1955 and traded in on 289C. Original 205L became 2nd 241C in November 1955.

¶ Units delivered in paint scheme shown on this styling diagram. Refer to side bar article in Third Quarter 1991 magazine.

Model Paints (see text):

Blue:	Floquil 3 pts. Dark Blue 1pt. Engine Black Scalecoat Santa Fe Blue
Yellow:	Floquil Reefer Yellow Scalecoat Reefer Yellow
Black:	Floquil Engine Black Scalecoat Engine Black

Decals:

Microscale	87-77 (HO) 60-77 (N)
Champ	EH-72 (HO)

Note: Early units painted in catwhisker scheme with creamy yellow paint. See FT styling diagram and text.

Note: The drawing on this diagram is for painting and lettering use only. Significant mechanical differences are present (drawing is actually an F-3 as all Santa Fe F-7's had D/B fans)!

Aperture cards of original styling blueprints were donated to the Santa Fe Modelers Organization by Electro-Motive Division, General Motors Corporation.

Published by the SFMO, October 1991