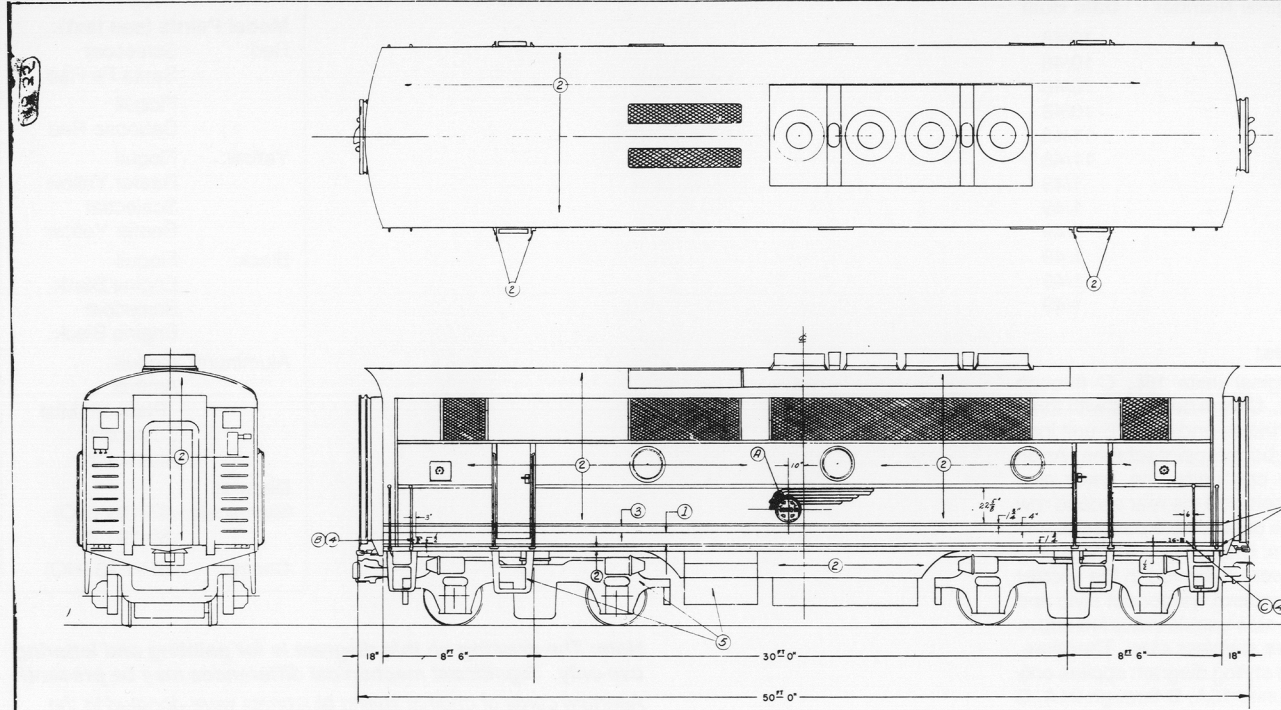


SANTA FE DIESEL LOCOMOTIVE STYLING DIAGRAM

F3-B PASSENGER



STYLING & PAINTING DATA

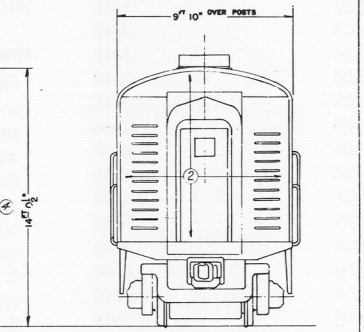
COLORS AND QUANTITIES REQUIRED FOR LOCOMOTIVE UNIT

| | |
|------------|----------------------|
| ① 241-2032 | DUPONT DUCO BLACK |
| ② 241-2404 | DUPONT DUCO ALUM |
| ③ 241-2125 | DUPONT DUCO YELLOW |
| ④ 241-2033 | DUPONT DUCO BLACK |
| ⑤ 241-220 | DUPONT DUCO ALUMINUM |
| ⑥ 241-1557 | DUPONT DUCO MARBLES |
| ⑦ 241-2181 | DUPONT DUCO IRON |

PAINTING DETAILS

| | |
|------------|-----------------------|
| ① 8086-4-8 | INCH MEAS. READING |
| ② 8074-0 | 3" LETTER-F |
| ③ 8077-4-8 | 2" UNIT CLASS NUMBERS |
| ④ | |
| ⑤ | |
| ⑥ | |
| ⑦ | |

REMARKS: ALL DIMENSIONS - 241-24793 ALUM



ELECTRO-MOTIVE DIVISION
 GENERAL MATERIALS DEPARTMENT

STYLING & PAINTING

① ② ③ ④ ⑤ ⑥ ⑦ ⑧ ⑨ ⑩ ⑪ ⑫ ⑬ ⑭ ⑮ ⑯ ⑰ ⑱ ⑲ ⑳ ㉑ ㉒ ㉓ ㉔ ㉕ ㉖ ㉗ ㉘ ㉙ ㉚ ㉛ ㉜ ㉝ ㉞ ㉟ ㊱ ㊲ ㊳ ㊴ ㊵ ㊶ ㊷ ㊸ ㊹ ㊺

DATE OF PRINT: 1/28-45
 APPROVED: [Signature]
 DRAWING NO: 8109698

SANTA FE DIESEL LOCOMOTIVE STYLING DIAGRAM

F3-B (BOOSTER) UNITS

| Original Number | Date Built | Original Number | Date Built |
|-----------------|------------|-----------------|------------|
| 16A | 11/46 | 31B | 10/48 |
| 16B | 11/46 | 31A | 10/48 |
| 17A | 11/46 | 32B | 10/48 |
| 17B | 11/46 | 32A | 10/48 |
| 18A | 11/46 | 33B | 11/48 |
| 18B | 11/46 | 33A | 11/48 |
| 19A | 11/46 | 34B | 1/49 |
| 19B | 11/46 | 34A | 1/49 |
| 20A | 11/46 | 35B | 1/49 |
| 20B | 11/46 | 35A | 1/49 |
| 21A | 11/46 | 36B | 1/49 |
| 21B | 11/46 | 36A | 1/49 |
| 22A | 3/48 | | |
| 22A | 3/48 | | |
| 23B | 3/48 | | |
| 23A | 3/48 | | |
| 24B | 4/48 | | |
| 24A | 4/48 | | |
| 25B | 4/48 | | |
| 25A | 4/48 | | |
| 26B | 5/48 | | |
| 26A | 5/48 | | |
| 27B | 5/48 | | |
| 27A | 5/48 | | |
| 28B | 6/48 | | |
| 28A | 6/48 | | |
| 29B | 6/48 | | |
| 29A | 6/48 | | |
| 30B | 9/48 | | |
| 30A | 9/48 | | |

Notes:

* Original units 16L, C through 21L, C were delivered with *three* portholes and in the E-unit long warbonnet paint scheme. As on the cab units, the lower side panels and the rear second row side panels were *painted* aluminum. Units 22L, C through 36L, C were delivered in the shorter (standard) warbonnet style and the side panels indicated above were *stainless steel*. Therefore, this styling diagram applies *only* to units 16A, B through 21A, B as delivered.

Model Paints (see text):

Red: Scalecoat
Santa Fe Red
Floquil
Caboose Red

Yellow: Floquil
Reefer Yellow
Scalecoat
Reefer Yellow

Black: Floquil
Engine Black
Scalecoat
Engine Black

Aluminum: Floquil
Amtrak
Platinum Mist
Scalecoat
Aluminum

Decals:

Microscale 87-101 (HO)
60-101 (N)
Champ BRH-73 (HO)

Note: The drawing on this diagram is for painting and lettering use only. Significant mechanical differences may be present!

Aperture cards of original styling blueprints were donated to the Santa Fe Modelers Organization by Electro-Motive Division, General Motors Corporation.

Published by the SFMO, October 1991