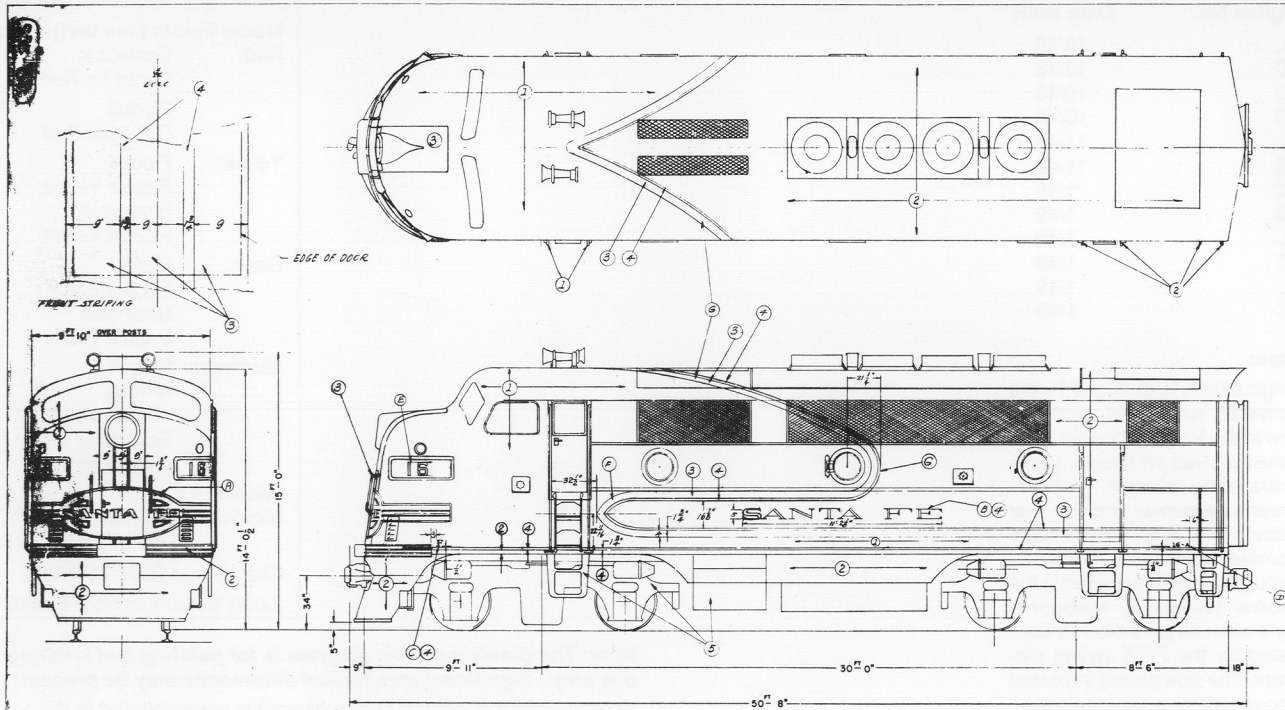


SANTA FE DIESEL LOCOMOTIVE STYLING DIAGRAM

F3-A PASSENGER



STYLING & PAINTING DATA

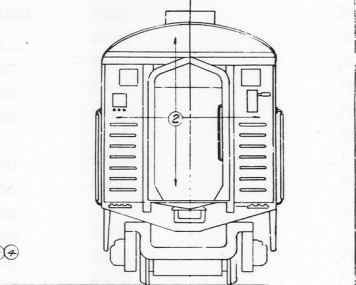
COLORS AND QUANTITIES REQUIRED PER LOCOMOTIVE UNIT

① 244-8198	DUPONT DUCC RED
② 244-8202	DUPONT DUCC NAVY
③ 244-3143	DUPONT DUCC YELLOW
④ 244-1339	DUPONT DUCC BLACK
⑤ 244-1320	DUPONT DUKAL ALUMINUM
⑥	
⑦	
⑧	
⑨	
⑩	

PAINTING DETAILS

① R16889	NOSE MEDALLION	② R07703	SIDE SPOON STRIPING
③ R07141	1" STRIP LETTERS		
④ R07140	3" LETTERS		
⑤ R07745	3" UNIT CELL MARKING		
⑥ R11043	8" MARKING STRIPING		
⑦ R07102	SIDE STRIP TERMINATION		

REMARKS: CAR GRABBERS - ALL OTHER RED - FRONT LETTERS 244-31435 - ALL OTHER LETTERS ALUMINUM



RAILROAD MOTIVE DIVISION
 U.S. DEPARTMENT OF COMMERCE
 U.S. GOVERNMENT PRINTING OFFICE

STYLING & PAINTING

DESIGNED BY E. G. SO. SANTA FE F3 LOCO

DATE: 11-28-51 APPROVED: [Signature] DRAWING NO. 8109697

REV. 1 DATE OF PRINT: [] REVISION: []

SANTA FE DIESEL LOCOMOTIVE STYLING DIAGRAM

F3-A (CAB) UNITS

Original No.	Date Built	Original No.	Date Built
16L*	11/46	31L	10/48
16C*	11/46	31C	10/48
17L*	11/46	32L	10/48
17C*	11/46	32C	10/48
18L*	11/46	33L	11/48
18C*	11/46	33C	11/48
19L*	11/46	34L	1/49
19C*	11/46	34C	1/49
20L*	11/46	35L	1/49
20C*	11/46	35C	1/49
21L*	11/46	36L	1/49
21C*	11/46	36C	1/49
22L	3/48		
22C	3/48		
23L	3/48		
23C	3/48		
24L	4/48		
24C	4/48		
25L	4/48		
25C	4/48		
26L	5/48		
26C	5/48		
27L	5/48		
27C	5/48		
28L	6/48		
28C	6/48		
29L	6/48		
29C	6/48		
30L	9/48		
30C	9/48		

Notes:

* Original units 16 through 21 were delivered with *three* portholes and in the long warbonnet paint scheme used on E-units (as illustrated on reverse). Also, the lower side panels and the rear second row side panels were *painted* aluminum. Units 22 through 36 were delivered in the shorter (standard) warbonnet style with two portholes as illustrated by the F-7A styling diagram. The side panels indicated above were *stainless steel*. Therefore, this styling diagram applies *only* to units 16 through 21 as delivered.

Model Paints (see text):

Red: Scalecoat
Santa Fe Red
Floquil
Caboose Red

Yellow: Floquil
Reefer Yellow
Scalecoat
Reefer Yellow

Black: Floquil
Engine Black
Scalecoat
Engine Black

Aluminum: Floquil
Amtrak
Platinum Mist
Scalecoat
Aluminum

Decals:

Microscale 87-101 (HO)
60-101 (N)

Champ BRH-73 (HO)
(Long warbonnet from E-unit)

Note: The drawing on this diagram is for painting and lettering use only. Significant mechanical differences may be present!

Aperture cards of original styling blueprints were donated to the Santa Fe Modelers Organization by Electro-Motive Division, General Motors Corporation.

Published by the SFMO, October 1991