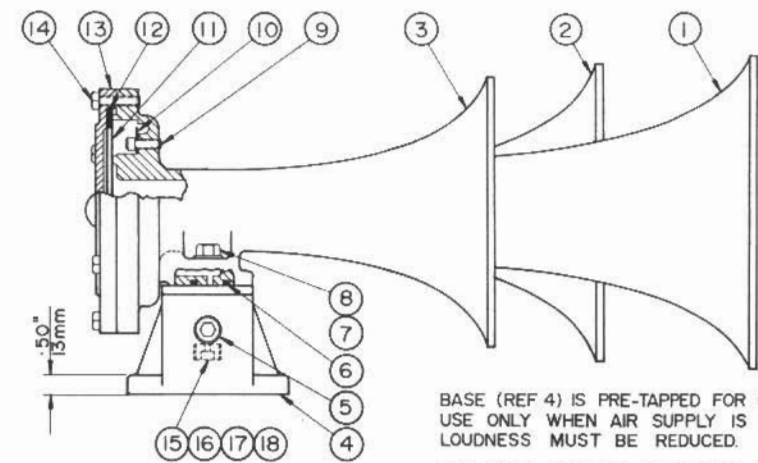


K-3L		K-3LA		PARTS COMMON TO BOTH K-3 MODELS		
PART	PART	REF	PART	DESCRIPTION	MATERIAL	QTY
30101	30101	1		BELL	DIE CAST ALUMINUM	1
30102	30102	2		BELL	DIE CAST ALUMINUM	1
30103	30107	3		BELL	DIE CAST ALUMINUM	1
		4	30126L	BASE	CAST ALUMINUM	1
		5	C-20966-4F	PIPE PLUG	STEEL CAD. PLATED	2
		6	30120-0	O RING GASKET	SYNTHETIC RUBBER	3
		7	30119	SCREW	STAINLESS STEEL	6
		8	30122	LOCKWASHER	STAINLESS STEEL	6
		9	30144	SCREW	STAINLESS STEEL	9
		10	30143	DIFFUSER	SHEET ALUMINUM	3
		11	30111	DIAPHRAGM DISC	STAINLESS STEEL	6
		12	30112	CUSHION RING	SILICONE RUBBER	3
		13	30109	DIAPHRAGM CAP	DIE CAST ALUMINUM	3
		14	30110	SCREW	STAINLESS STEEL	18
		15	C-2109-24	RESTRICTOR-86 CFM	STEEL CAD. PLATED	
		16	C-21019-26	RESTRICTOR-66 CFM	STEEL CAD. PLATED	
		17	C-21019-28	RESTRICTOR-46 CFM	STEEL CAD. PLATED	
		18	C-21019-30	RESTRICTOR-32 CFM	STEEL CAD. PLATED	

BELL FREQUENCIES			
MODEL	REF 1	REF 2	REF 3
K-3L	311 Hz	370Hz	470Hz
K-3LA	311 Hz	370Hz	494Hz

DIMENSIONS		
REF	K-3L	K-3LA
A	6.75\"/>	
B	7.06\"/>	

NET WEIGHT EITHER MODEL APPROX. 21 LBS. OR 95 KG.



BASE (REF 4) IS PRE-TAPPED FOR C-21019 RESTRICTOR (REF 15-18) USE ONLY WHEN AIR SUPPLY IS LIMITED OR WHEN LOUDNESS MUST BE REDUCED.
 ANY BELL CAN BE REVERSED BY REMOVING SCREWS AND RE-ASSEMBLING BELL IN OPPOSITE DIRECTION.

AIRCHIME MANUFACTURING CO. LTD.
 BURNABY B.C. CANADA

MODEL 'K' 3 BELL WHISTLES

DESIGN G.W.P. 2-18-80 DRAWING NO. WH-30138
 DRAWN P.L.R. 3-18-80